

LAMMHULTS

Furniture that lightens the mood

Liberatingly simple yet decidedly expressive and optimistic, this year's two new products embody the cross between the colourful pop aesthetics and the functional modernism that is Lammhults' DNA. With its boldly curved yet invitingly soft lines, Note's new Bau is a refreshingly informal easy chair and modular seating series. Ciao by Gunilla Allard is a table that manages to balance expressiveness with lightness and crisp elegance.

It's no coincidence that Bau and Ciao rhyme. Indeed, the two furniture pieces go really well together. Not by resembling each other but by affirming and enhancing each other's distinct personalities. Gunilla Allard and Note each developed their respective works while having insight into the other's processes.

This year, Lammhults will also launch a fully upholstered version of the comfortable Grade Plus chair by Johannes Foersom and Peter Hiort-Lorenzen.

"I can't look at Bau and Ciao without smiling. They make me think that sustainability isn't just a matter of materials; it's about aesthetics, too. In other words, I think they're two furniture pieces that will spread joy for a long time to come."

— Åsa van Drumpt, CEO, Lammhults.

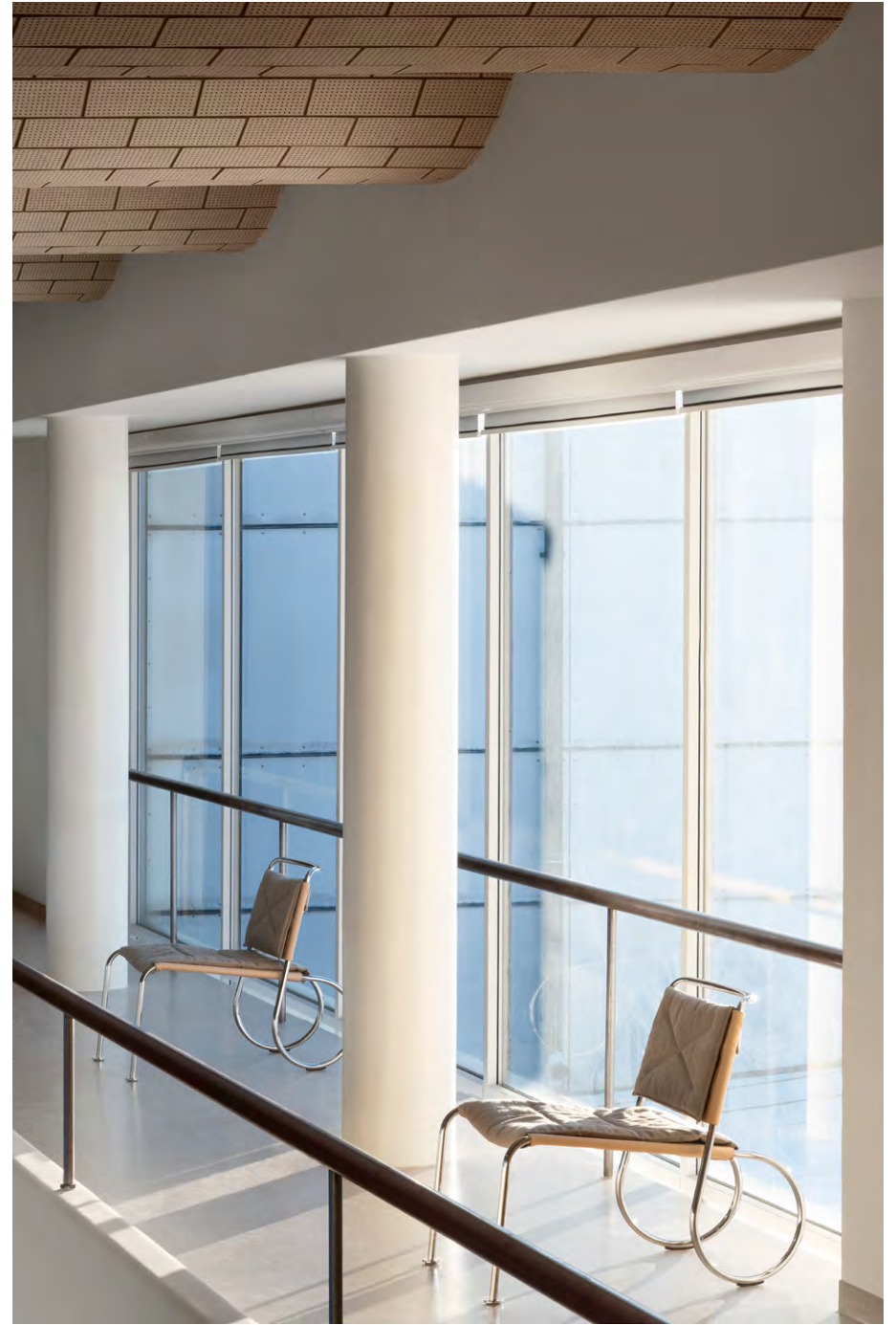




BAU Modular seating
CIAO Table



GRADE PLUS Armchair

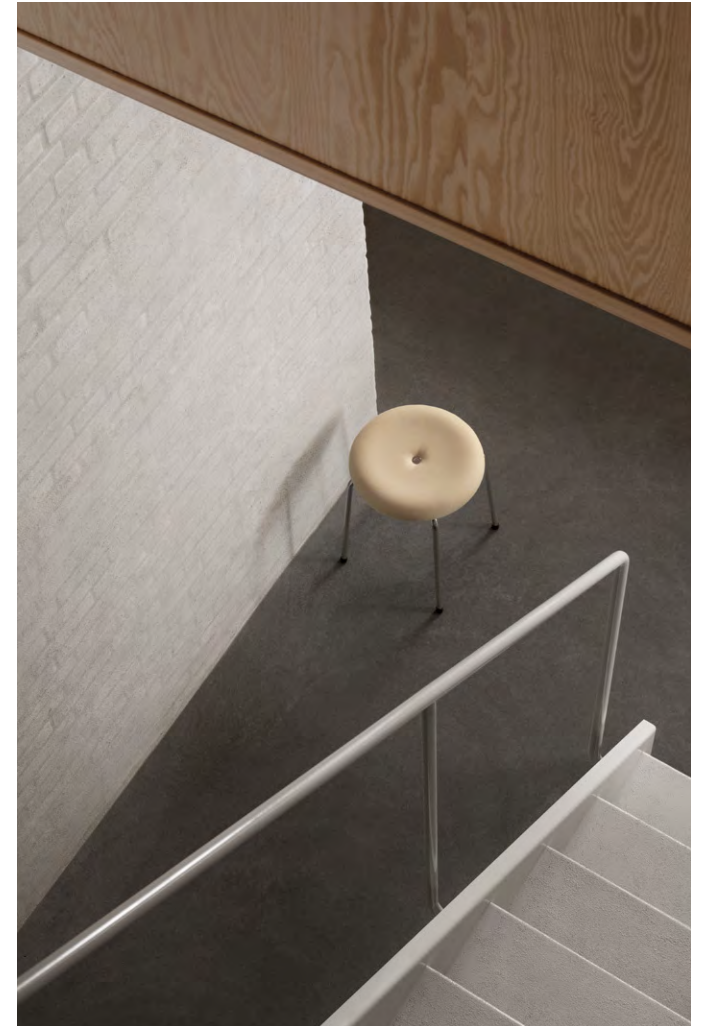


CORSO Easy chair



SUNNY Easy chair & modular seating

Selected Works

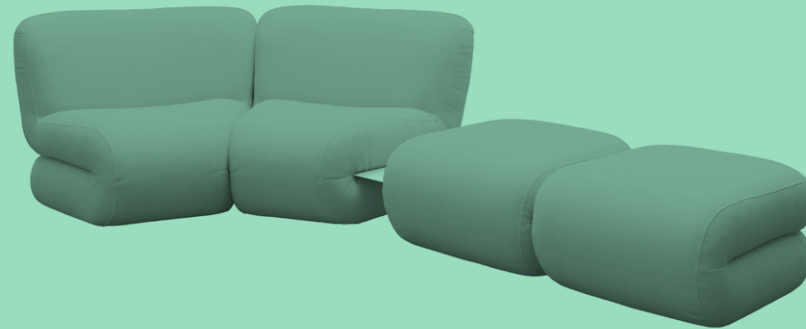


TABURETT Stool



BAU

Anti-ordinary, versatile and expressive



Bau is an anti-ordinary and colourful modular seating series that encourages us to furnish and design our interior environments in ways that suit us — more freely and playfully, with no regard for conventional prescriptions of right and wrong.



Favourable by its nature to interior design projects, Bau can be employed as a solitary easy chair or combined to create a variety of seating configurations. The Bau collection includes a linking table whose geometrical edginess contrasts with the sofa's laid-back personality.



Bau is softer, lower, and more eccentric than the often somewhat rigid and conformist modular systems to which we have become accustomed, particularly in workplaces and public spaces.



“The truth is, we design furniture for the second-hand market, in the sense that it’s not enough for the materials to be durable. The aesthetics have to be, as well. A furniture piece must have such a strong identity and personality that it keeps on meaning something, even to future generations.”

— Kristoffer Fagerström, Designer, Note.

Lammhults is rooted in modernist ideals of equality, simplicity, and function. Yet, function must be balanced with emotion and individual character. Otherwise, it would just be boring.

An interplay of geometric shapes



Like the names of many of her previous furniture pieces for Lammhults, the name of Gunilla Allard’s new table begins with a C. And, like them, Ciao is a piece that challenges the conventional distinction between furniture for home environments and furniture for public spaces. Yet, similarities aside, Allard has come up with something new this time. Ciao’s expression is more bold and powerful than her earlier, aesthetically minimalist works.

Through its interplay of geometric shapes, the table manages to balance expressiveness with lightness and crisp elegance. Generously dimensioned, Ciao’s statement is boldly cubist and monochromatic. Ciao is available in nine versions.

Ciao is a table that claims its place without dominating the room — which is important to Allard. From her background as a set designer, she is well aware that neither the room itself nor its furnishing is ever the star of the show.

“Furniture should contribute harmony and character to a space. And help the story move forward, like low-key peripheral actors. It’s the people in the space who perform the leading roles.”

— Gunilla Allard, Designer.



Design: Gunilla Allard

CIAO





A22 Stool

CAMPUS Table



ATLAS AIR Armchair

ATTACH Table



S70-3 Barstool
S70-12 Coat hanger



News 2023

BAU

Design: Note

Modular seating

2023

Shell of fibre board with high resilient polyurethane foam. Adjustable glides. All modules can be used as solitaires or be linked with an additional linking device. Linking table, 300x490 mm, table top of 3 mm texture powder coated sheet metal.

Height: 420/720 mm

Width: 750/870/1000 mm

Depth: 800/900 mm

Seat height: 390/420 mm



GRADE PLUS

Design: Johannes Foersom & Peter Hiort-Lorenzen

Armchair

2023 (Fully upholstered)

Frame of Ø16 powder coated or chromium plated steel tubing alt. solid ash legs. 4-feet and 5-feet swivel base, 360°, with feet of cast recycled aluminum and pillar with Ø40 mm recycled aluminum cover. Glides. Casters as an option. Fully upholstered seat shell with high resilient polypropylene foam. Additional felt glides.

Height: 800/880 mm

Width: 590/700 mm

Depth: 550/670 mm

Seat height: 460 mm

CIAO

Design: Gunilla Allard

Table

2023

Pillar base of Ø140 mm powder coated steel tubing, foot plate of 5 mm sheet steel. Felt glides. Table top of 16 mm MDF with high pressure laminate.

Height: 320/420/520 mm

Width: Ø400/500/800 mm

Standard colours: Black/White/Light blue/Beige/Yellow





News 2023 & Selected Works

Design & Production: Note

Photo direction: Note

Photography: Erik Lefvander

Styling: Marie Graunbøl

Copywriting: Jens Soneryd

Print: Taberg Media Group

© 2023 Lammhults Möbel AB

LAMMHULTS

Lammhults Möbel AB

Box 26
SE—363 03 Lammhult
Sweden

+46 472 26 95 00
info@lammhults.se
www.lammhults.se

Swedish furniture since 1945