

**SOFT
LINE**

OUR VALUES

SOFTLINE has come a long way since we started making furniture in 1979. We have become an international brand by creating innovative, iconic, and high-quality furniture, and our modern, colourful designs can be found all over the world. At SOFTLINE, our roots define our company culture. This is also reflected in our values and how we aspire to do business every day.

INNOVATION AND DESIGN

Always looking forward is embedded in our DNA. Spotting new trends in the way that we live, discovering new materials, developing designs to meet the ever-changing needs of our customers, and continuously investing in new products and technologies are key to SOFTLINE.

QUALITY AND SUSTAINABILITY

We always work to achieve the highest standards of craftsmanship with our skilful staff in the design and production departments at the SOFTLINE factory in Denmark. As a part of our sustainability program, our high-quality products are made to last thanks to our certified materials that meet the highest environmental standards, and we strive to ensure an eco-friendly, sustainable production in line with international standards.

FUNCTIONALITY AND COMFORT

Since the launch of our first sofa bed back in 1979, functionality and effectiveness have been key in the SOFTLINE furniture production. To work with comfort and functionality is an integrated part of the design process, ensuring that the composition of our furniture provides the flexibility and freedom that the modern lifestyle requires.

MADE IN DENMARK

Fair and safe working conditions are a given at SOFTLINE, where we build upon the tradition and heritage of Danish design with nature being a big source of inspiration. We work with talented designers to develop high-quality furniture that people across the world will enjoy living with and using every single day.



INDEX



AIKO
page 70



AIKO SWIVEL
page 71



ANGEL
page 72



APOLLO
page 74



BAIXA
page 10



BASEL
page 12



BASKET
page 50



BOB
page 14



CALETO
page 18



CHAT
page 76



CITY
page 110



CLAY
page 20



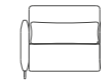
CLUB
page 22



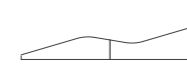
COCO
page 24



COCO SWIVEL
page 26



CORD
page 78



EASY
page 80



EDEN
page 28



ESPRIT
page 68



EVY
page 30



FLUID
page 86



FOLD
page 88



GRAND PRIX
page 32



GROOVE
page 82



HALO
page 84



HAVANA
page 34



HAVANA SWIVEL
page 36



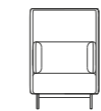
HELLO
page 90



HUGO
page 92



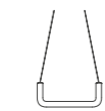
JAVA
page 38



JOE
page 40



MAGNUM
page 66



ME&U
page 94



MOAI
page 42



MOAI SWIVEL
page 44



NOLA
page 96



NOOMI
page 46



NOOMI STRING
page 48



NUUK
page 52



OPERA
page 54



ORLANDO
page 100



ORLANDO WOOD
page 102



PICOLO
page 56



RUFLE
page 58



SAND
page 98



BASEL
page 12



BASKET
page 50



BOB
page 14



CALETO
page 18



CHAT
page 76



SCOPE
page 60



SENSE
page 104



SHELLY
page 106



SILVER
page 108



SITT
page 64



STANDBY
page 114



VENICE
page 112



VERA
page 62



VISTA
page 16

DESIGNERS



Busk + Hertzog



Johannes Steinbauer



Stine Engelbrechtsen



Javier Moreno



Jakob Schenk



Susanne Grønlund



Matthias Demacker



Müller & Wulff



Phillip Bro



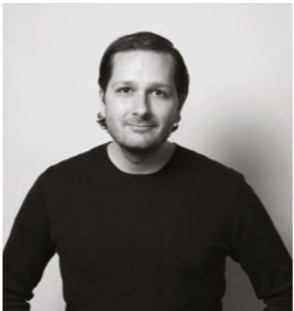
Sascha Sartory



Charlotte Höncke



Robert Zoller



Skrivo



Andreas Lund



Kurt Brandt



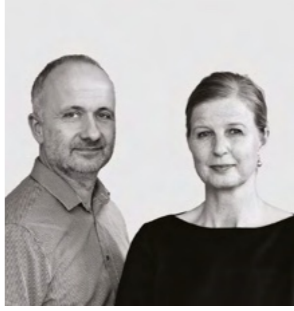
Hiromichi Konno



Format



Böttcher & Kaiser



Simon & Jahn



Michiel van der Kley

DESIGN: BUSK + HERTZOG

Settle in.
BAIXA is a comfortable lounge chair with a unique design that captures the past as well as the future. Flowingly the lumbar support turns into the armrest – round and soft like the upper part of the backrest.

GOOD DESIGN AWARD 2019

Chair
L 85 D 86 H 71 SH 40/33 cm





BASEL

DESIGN: BUSK + HERTZOG

Futuristic and fun
The clean lines and the simplicity of the design are striking, but a closer look reveals even more design details that give BASEL a very unique character. The lines of the seat are a fusion of several geometrical shapes that results in the unique shape that is both tight and soft at the same time. The characteristic backrest works as an integrated and discrete armrest and is an advanced 3-dimensional design element despite the minimalistic look.

13

Sofa
L 212 D 94 H 81 SH 40 cm
Chair
L 95 D 94 H 81 SH 40 cm



BOB

DESIGN : ANDREAS LUND

The sofa sidekick.
The BOB chair is designed to accompany a sofa or work as an extra chair in the living room, the sofa group, the chill-out area or the kid's room. The chair is recognized by its dense, comic-like look and charming charisma that appeals to kids as well as adults. The dimensions and simple detailing make it equally comfortable and classic.

15

Chair
L 41 D 67 H 63 SH 33 cm

VISTA

16

DESIGN : BUSK + HERTZOG

VISTA is an upholstered lounge chair with a swivel base. The simple, yet distinctively inviting design makes VISTA a highly versatile piece of furniture that will fit into any interior design concept, whether in the living room, hotel lobby, office, or hospital. The timeless and elegant design, combined with VISTA's generous proportions and integrated armrests, provides a luxurious seating comfort with multiple seating positions, making even longer stays a pleasant experience.

VISTA is the first launch from a brand-new upholstery series that will meet all soft seating needs across the company, business, or home with thorough and comfortable design – without ever compromising on aesthetics or functionality.

GOOD DESIGN AWARD 2023

Swivel Chair
L 74 D 74 H 72 SH 40/33 cm



DESIGN: SASCHA SARTORY

The CALETO chair is designed with a focus on creating an ergonomic backrest support that provides the best possible comfort in various seating positions and user scenarios.

The timeless design is clean and minimalistic and works well in many different environments, like the private dining room, by the desk at home or at the office, in meeting rooms or at restaurants. On the outside of the shell it looks like the upholstery moves in an inch on the lower part, and on the inside of the shell you can see how this detail is translated into a soft and round convex shape that adapts to your back and adds support to your lumbar region. This functional construction of the seat shell creates a light and airy overall appearance. The CALETO chair is available with four different base solutions.

Winner of Green Good Design Award 2023

Chair
L 60 D 54 H 77 SH 47 SD 42 cm



CLAY



DESIGN: JAVIER MORENO

Lounge chair
L 100 D 96 H 87 SH 41 cm
Sofa
L 184 D 96 H 87 SH 41 cm
Pouf
L 96 D 92 H 39 cm

Soft shapes.
The CLAY seating concept has a strong, sculptural expression that adds a fresh and modern touch to private homes and public spaces. The organic design and the continuous seam on the edge of the chair create an elegant and minimalistic look. With the soft and comfortable upholstery, CLAY is the perfect spot to settle in for "hygge".

GOOD DESIGN AWARD 2019

CLUB

DESIGN: JAVIER MORENO

Minimalistic icon without boundaries. Club collection has been designed with simplicity and usefulness in mind and will transform any outdoor or indoor space thanks to its simple modular character and its durable materials. This sofa boasts simplicity, with clean lines and a minimalist design that exudes modern elegance. Its thick steel structure ensures durability, able to withstand even the toughest outdoor conditions. The loose cushions add an element of practicality in case of sudden rain. Club can match any decoration style, since it blends with the environment in a discreet way rather than being too noisy.

- Chair
 - L 94 D 81 H 77 SH 42 cm
- Single Element
 - L 90 D 81 H 77 SH 42 cm
- Element Arm Left
 - L 90 D 81 H 77 SH 42 cm
- Element Arm Right
 - L 90 D 81 H 77 SH 42 cm
- Pouf
 - L 90 D 81 H 42 SH 42 cm
- Square Table
 - L 80 D 80 H 25 cm
- Rectangular Table
 - L 80 D 53 H 25 cm
- Round Table
 - Ø36 H 38 cm



COCO



DESIGN: BUSK + HERTZOG

Versatile elegance.
Sit back and relax in the elegant COCO chair. The defined, rounded lines give this chair a modern look that works perfectly in any setting – private or public. Choose between a number of fabrics and colours to match your interior design and visions.



Chair
L 65 D 73 H 76 SH 40 cm

COCO SWIVEL

DESIGN: BUSK + HERTZOG

Sleek and sophisticated.
The softly rounded armrests and back invite you to have a seat and feel the outstanding comfort of this sleek and sophisticated swivel chair. Casual and cool, COCO SWIVEL suits all kinds of rooms and spaces.



Chair
L 65 D 73 H 76 SH 40 cm





EDEN

DESIGN: BUSK + HERTZOG

Playing with contrasts. Did you notice the stitching inspired by sports cars on the EDEN chair? Combined with a classic and stylish wooden frame, EDEN is refreshingly new. The chair is spacious with a soft and comfortable seat and backrest that allow for various seating positions. The design bridges many different elements like the soft and the masculine, innovation and tradition. Perfect for private as well as public spaces.

GOOD DESIGN AWARD 2014

Chair
L 74 D 86 H 87 SH 41/38 cm

EVY

DESIGN: BUSK + HERTZOG

Maximum minimalism.
Comfort and elegance are beautifully united in the lounge chair EVY, designed by busk+hertzog. A clean design with a minimum of materials used to create the elegant and modern look that busk+hertzog is known for. This lounge chair challenges our perception of dimensions and lets the big, comfortable backrest act as a contrast to the less pronounced seat and the light, airy frame.

GOOD DESIGN AWARD 2020

Chair
L 81 D 63 H 81 SH 40/36 cm



GRAND PRIX



DESIGN : FORMAT

A different kind of rocking chair. The decorative GRAND PRIX rocking chair is one of a kind. The shape and design is fun and happy and is equally attractive to kids, teens and adults. Even the children of the Danish royal family have a unique monogrammed version of the GRAND PRIX rocking chair.

Rocking chair small
L 50 D 80 H 53 SH 24 cm
Rocking chair large
L 61 D 102 H 68 SH 42 cm

DESIGN : BUSK + HERTZOG

A new classic.
Looking for an iconic armchair for relaxation, contemplation and admiration? HAVANA is like a classic armchair that has been given a super-modern makeover with details and a rounded design that doesn't compromise on comfort. As the name suggests, this chair is synonymous with comfort and warmth – with or without a cigar.

Interior Innovation Award 2014

GOOD DESIGN AWARD 2014



Wing chair
L 79 D 95 H 113 SH 39/35 cm
Low chair
L 79 D 88 H 86 SH 39/35 cm
Footstool
L 58 D 48 H 39 cm

HAVANA





HAVANA SWIVEL

DESIGN : BUSK + HERTZOG

A spinning success.
The highly successful HAVANA wing chair is also available with a swivel base. It captures all the original features and virtues of HAVANA with a dynamic, modern and light design, outstanding comfort and exclusive finish.

GOOD DESIGN AWARD 2014



Wing chair
L 79 D 90 H 113 SH 39/35 cm
Low chair
L 79 D 83 H 86 SH 39/35 cm

JAVA

DESIGN: BUSK + HERTZOG

Time for reflection.

The seat and the back of the JAVA chair mirror each other to create a soft and inviting design. The light and delicate metal frame give this spacious chair a lovely sense of balance. JAVA can be used in both private and public spaces, and it can be placed anywhere in the room thanks to detailing on the back frame and the integrated design of the back and seat. Beautiful on its own or in a group.

Chair

L 80 D 78 H 67 SH 39/33 cm

Sofa

L 152 D 78 H 67 SH 39/33 cm



JOE



DESIGN: BÖTTCHER AND KAYSER

JOE is a series of soft, flexible seating furniture based on strong shapes, geometric curves, and clear lines. The centrepiece of the series is a circular pouf with slim legs. All seating elements are embraced by a light back wall that serves as a protective shell and creates comfort and privacy for relaxation or private conversations in hotel lobbies, lounge areas, libraries, or modern offices spaces. The soft backrest cushion provides maximum comfort. The family of seating poufs, sofas and armchairs are completed by a matching coffee table with the same floating appearance.

GREEN GOOD DESIGN AWARD 2023

Chair Low Back
L 82 D 78 H 79 SH 45 cm
Chair High Back
L 82 D 78 H 130 SH 45 cm
Sofa Low Back
L 159 D 78 H 79,5 SH 45 cm
Sofa High Back
L 159 D 78 H 130 SH 45 cm
Pouf Small
Ø 74 H 45 cm
Pouf Large
L 149 D 74 H 45 cm
Table Low
Ø 74 H 21,5 cm
Table High
Ø 74 H 31,5 cm

DESIGN: PHILIP BRO

Relax and drift away.

The large shell of the MOAI chair is inspired by the soft shapes of bricks and stone rolling back and forth on the beach. It's designed to close comfortably around you when you sit in it. A quiet little room on four legs that lets you have a peaceful moment for yourself, created for privacy with optimum acoustics.

The distinctive notches around the armrest add personality and act as comfortable support when you're getting up. From the side, the MOAI chair has a unique and slightly naive expression that's reminiscent of the massive sculptures of faces on Easter Island.

GOOD DESIGN AWARD 2017

GERMAN DESIGN AWARD 2018

Lounge chair

L 89 D 81 H 125 SH 45 cm

Sofa

L 149 D 81 H 125 SH 45 cm

MOAI



MOAI SWIVEL



DESIGN: PHILIP BRO

Elegant and sculptural
MOAI also comes with an elegant swivel base.
The chair is designed to close comfortably around you
and acts as a small room that allows you to enjoy a
moment of peace and contemplating.
From the side, the MOAI chair has a unique and slight-
ly naive expression reminiscent of the massive sculp-
tures of faces on Easter Island.

GOOD DESIGN AWARD 2017

GERMAN DESIGN AWARD 2018

Swivel chair
L 89 D 81 H 125 SH 45 cm

NOOMI SWIVEL

DESIGN : SUSANNE GRØNLUND

Elegant lounge chair.
NOOMI is a modern chair with a classic feel. The soft, simple look and understated, inviting elegance have clear references to the Scandinavian design tradition. NOOMI is designed for both public and private spaces and adds comfort and elegance.

Swivel Chair
L 84 D 71 H 90 / SH 45 cm
Footstool
L 53 D 37 H 41 SH 39 cm





NOOMI STRING

DESIGN: SUSANNE GRÖNLUND

Growing into something new. With references to branches on a tree, the delicate and slightly bent legs seize the upper part of the chair and create a strong graphic expression. The frame is light, but distinctive with a modern shape that almost makes the soft, rounded upper part of the chair look like it's hovering above the floor. An ultra-modern chair where steel and fabric meet in a harmonic and organic whole.

GOOD DESIGN AWARD 2017

GERMAN DESIGN AWARD 2018

Chair
L 84 D 76 H 90 SH 41/45 cm

BASKET

DESIGN: MATTHIAS DEMACKER

Colourful beach baskets

Inspired by functional beach baskets, BASKET is designed as an integrated modular system with two different back heights. This allows you to customize and design your seating just the way you like it. The intelligent sofa is a great setting for an intimate and cosy time alone – or with friends, family or colleagues. The BASKET armchair comes with a swivel or fixed base. The BASKET poufs can be used as a footrest or a side table.

Chair Low Back

L 90 D 74 H 93 SH 42 cm

Chair High Back

L 95 D 74 H 126 SH 42 cm

Swivel Chair Low Back

L 90 D 74 H 93 SH 42 cm

Swivel Chair High Back

L 95 D 74 H 126 SH 42 cm

Sofa Low Back

L 147 D 74 H 93 SH 42 cm

Sofa High Back

L 152 D 74 H 126 SH 42 cm

Pouf Small

L 84 D 50 H 42 SH 42 cm

Pouf Large

L 142 D 50 H 42 SH 42 cm



NUUK

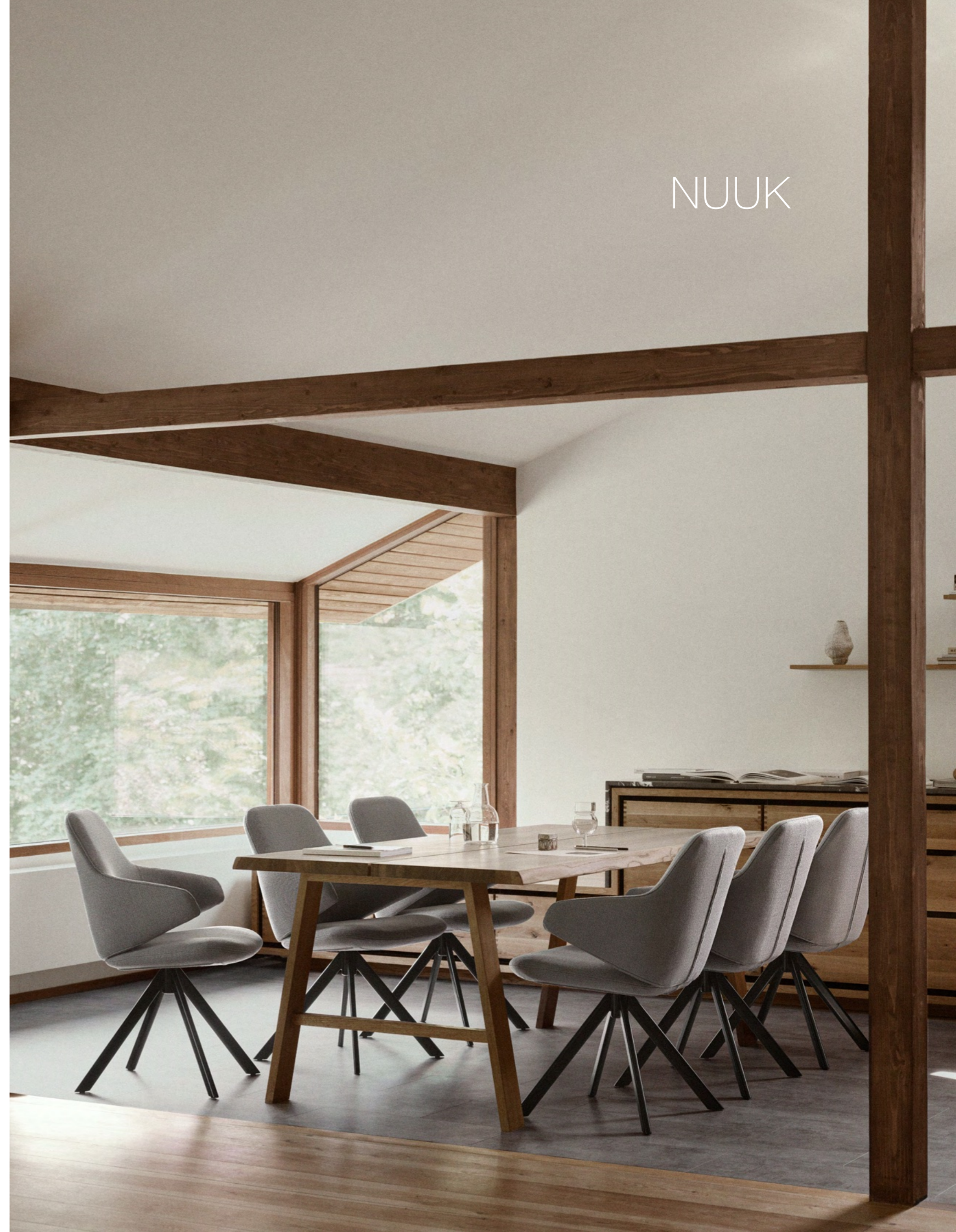
DESIGN: BUSK + HERTZOG

Have a seat.
NUUK is an extremely versatile and comfortable chair. With integrated armrests in organic shapes and light, yet characteristic frame, it works equally well as a dining room chair and as a guest chair in the office.

The size and shape of the armrest make the chair practical and suitable for a table, while providing lots of comfort for sitting and working. The chair is shaped to be welcoming and is made in a durable, modern design.

GOOD DESIGN AWARD 2019

Chair
L 61 D 62 H 82 SH 50/48 cm





OPERA

DESIGN: BUSK + HERTZOG

A symphony of possibilities. The OPERA sofa and chair is designed with our need for both communication, interaction and privacy in mind. Choose a high or a low backrest depending on the atmosphere you wish to create. OPERA can be used single standing, in traditional seating groups or in larger configurations. A combination of the sofas and the chairs create a fresh and contemporary look.

55

Sofa / High Back
L 148 D 76 H 134 SH 42 cm
Sofa / Low Back
L 148 D 76 H 79 SH 42 cm
Chair / High Back
L 78 D 76 H 134 SH 42 cm
Chair / Low Back
L 78 D 76 H 79 SH 42 cm
Cushion
L 66 D 11 H 47 cm

PICOLO

DESIGN: SASCHA SARTORY

At your service.

The round and welcoming shape of the PICOLO lounge chair invites you to sit down and relax. It offers maximum comfort in a contemporary and minimalistic design that suits all kinds of environments. Even a small room can fit this compact and versatile lounge chair that will be an elegant addition to the interior design. The seat is upholstered with high-quality foam placed inside a sleek steel frame that also holds the soft backrest.

56

Chair
L 79 D 70 H 67 SH 40 cm



RUFLE



DESIGN: JAVIER MORENO

RUFLE is an elegant and comfortable lounge seating series, that facilitates independent working sessions, conversational groups or a private, peaceful retreat. At the heart of the RUFLE Lounge Collection lies an innovative and captivating geometry that transforms any space into a haven of elegance and comfort. The defining feature of RUFLE is its curvaceous and inviting backrest, carefully designed to create a unique experience of comfort and aesthetics. The gentle, flowing curves of RUFLE's backrest are more than just a visual delight; they cradle your body in a warm embrace, inviting relaxation and repose. This distinctive concave shape isn't just about style; it's a testimony to ergonomic and individual needs.



Chair Medium
L 82 D 73 H 80 SH 40/37 cm
Chair High
L 85 D 82 H 101 SH 40/37 cm



Sofa
L 162 D 80 H 73 SH 39 cm
Chair
L 87 D 80 H 73 SH 39 cm

SCOPE

DESIGN: ROBERT ZOLLER

Comfy and compact.
With a small, comfy and compact appearance, SCOPE offers a modern and relaxed approach to design. The comfort and quality is high, and the lines are classic and timeless. Perfect for urban living where space is limited.





VERA

DESIGN: BUSK + HERTZOG

Floating in space
With a soft and round shape defined between four lines, VERA is a welcoming and eye-catching lounge chair. The seat and the backrest are divided into six distinct areas that create a beautiful contrast to the round and organic surface that make up the outside of the chair. An elegant swivel base gives the chair a light expression in spite of the generous and comfortable size of the seat. Depending on the fabrics and colours chosen, VERA can be used as a focal point in the interior decoration – or more quietly blending in with other furniture.

GOOD DESIGN AWARD 2018

Chair
L 99 D 85 H 76 SH 40/37 cm

SITT

DESIGN: SUSANNE GRØNLUND

An innovative bean bag
SITT is a unique bean bag that lets you sit in different comfortable positions. The special design of the cover creates stability, so it doesn't collapse. It even looks good after you've used it. Available in materials for outdoor and indoor use.

64

Bean bag
L 80 D 130 H 73 SH 30 cm



MAGNUM



DESIGN : SOFTLINE DESIGN TEAM

A timeless Classic.
The MAGNUM beanbag will shape itself around your body, offering the perfect base for chilling, listening to music, watching a movie or reading a book. It can be used in both private and public spaces, and MAGNUM comes in a vast number of fabrics and colours to match any interior style.
Available in materials for outdoor and indoor use.

Bean bag
325 L
Ø 100 H 70 cm

ESPRIT

DESIGN : SOFTLINE DESIGN TEAM

A timeless classic.
The ESPRIT beanbag will shape itself around your body, offering the perfect base for chilling, listening to music, watching a movie or reading a book. All homes need a beanbag, and ESPRIT comes in a huge number of fabrics and colours to match any style.



Bean bag
200 L
Ø 85 H 54 cm

AIKO

DESIGN: SUSANNE GRÖNLUND

Elegant and light.
The AIKO armchair is an all-round lounge, dining or conference chair that will add a touch of elegance in homes and public spaces alike. The chair is available with a swivel base that brings out the clean lines and simplicity of the design. The seat is in an all-enveloping design, and the lines of the chair make AIKO incredibly comfortable. A popular chair and a classic design in the SOFTLINE collection.



AIKO SWIVEL



Lounge Chair
L 64 D 58 H 70 SH 45 cm
Conference Chair
L 64 D 58 H 75 SH 50 cm
Swivel Chair
L 64 D 55 H 75 SH 50 cm



ANGEL

DESIGN : BUSK + HERTZOG

Iconic forms.
With an edgy and iconic design, ANGEL is a lounge chair that can be used as a stand-alone element in the interior design, but also works perfectly in combination with other styles of furniture for a personal and modern look. The design is soft, inviting and ultra-stylish at the same time.

73

GOOD DESIGN AWARD 2011

Chair
L 81 D 76 H 102 SH 42 cm

APOLLO

DESIGN: STINE ENGELBRECHTSEN

Keep on rocking.
A rocking chair? Yes, a fun rocking chair in a modern design, that is precisely what APOLLO is. Very decorative and a sculpture on its own, the APOLLO chair will be your new favourite place to relax. The design is compact and space-saving.

Rocking Chair
L 69 D 78 H 65 SH 37 cm
Footstool
L 50 D 46 H 26 SH 26 cm





CHAT

DESIGN: HIROMICHI KONNO

A sculpture to relax in. CHAT is designed to provide the perfect setting for people to sit and have a chat, but there are many more ways to use it. The design combines the elegant, organic round shape of the backrest with the cubic lines of the seating element for a sculptural look. The top quality materials make the comfort superb.

77

Sofa
L 210 D 100 H 85 SH 39 cm
Chair
L 120 D 100 H 79 SH 39 cm



CORD

DESIGN: BUSK + HERTZOG

Elegant and practical .
This sofa bed has it all: Style, comfort, a hidden bed and eight backrest positions. It's compact and perfect for small urban spaces. Available as a chair that turns into a single bed, and as a sofa that turns into a bed for two people.

79



Sofa
L 170 D 96 H 76 SH 38 cm
Bed: 148 x 200 cm
Chair
L 95 D 96 H 76 SH 38 cm
Bed: 74 x 200 cm



EASY

DESIGN: PHILLIP BRO

The curvy lines of EASY invite you to relax in elegant comfort. Use EASY to lounge, as a pouf, tray table, seat and more. Folded or open, stacked or by itself? Simply play around and discover the many ways to use EASY. Available in materials for outdoor and indoor use.

81

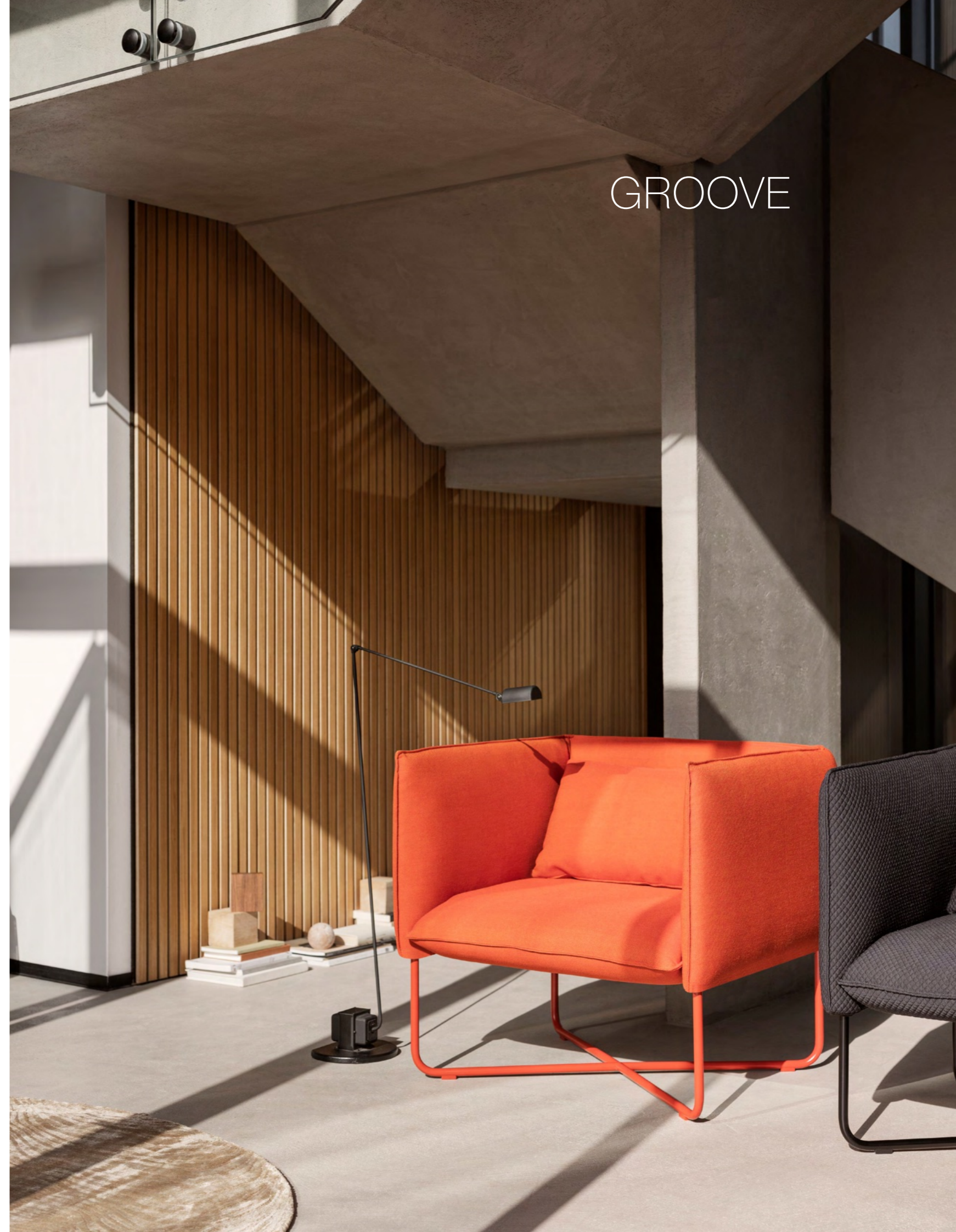
Relax Chair
L 70 D 190 H 39 cm
Bed
70 x 190 cm

GROOVE

DESIGN: BUSK + HERTZOG

Suits any home.
GROOVE is incredibly comfortable and easy to style in any interior setting. With its classic and contemporary design, GROOVE fits right into any living room and adds a touch of style. Choose a colour and fabric to match your design visions.

Chair
L 80 D 75 H 76 SH 40 cm





HALO

DESIGN: SKRIVO

85

All around you.
The HALO seating system allows you to mix and match different backrest elements to create a variety of seating configurations, ranging from a single-seat chair, a public seating system or a three-seat sofa. The main feature is a very large backrest – reminiscent of a saint's halo – that can provide additional comfort, but also creates privacy and improves acoustics without having to shut off the world entirely.

Chair
L 125 D 87 H 109 SH 39 cm
Sofa
L 242 D 87 H 109 SH 39 cm



DESIGN: BUSK + HERTZOG

An invitation to relax.
 FLUID is a relaxing and comfortable sofa and chair based on the beanbag principle. It adapts to the person who sits in it, and it's incredibly relaxing. Light, comfy and available in materials for indoor and outdoor use.

Sofa
 L 160 D 105 H 65 SH 30 cm
 Chair
 L 95 D 105 H 65 SH 30 cm



FOLD



DESIGN: BUSK + HERTZOG

Origami unfolded. Remember the folded paper fortune-tellers that children make? The iconic and truly striking lounge chair FOLD is inspired by those. The upholstery is constructed of various geometric shapes and sits simply on four distinct legs. This creates a light and springy look despite the generous padding. A relaxing chair for private homes and public spaces.

Chair
L 106 D 75 H 67 SH 42/45 cm

GOOD DESIGN AWARD 2016

GERMAN DESIGN AWARD 2018



Chair
L 75 D 75 H 70 SH 40 cm

HELLO

DESIGN: BUSK + HERTZOG

Iresistible charm and character. The Danish Broadcast Cooperation asked busk+hertzog to design a chair especially for Kylie Minogue, as a gift from them to her. Designer Flemming Busk says about the chair: "The name of the chair is HELLO and the design is round, open and happy – like a mouth calling out to people, asking them to come closer."





HUGO

DESIGN: BUSK + HERTZOG

Snug and charming. HUGO is a snug lounge chair created for a modern lifestyle. With character and charm, HUGO is the obvious choice for the design-conscious – as a stand-alone chair in the private home or as a part of a lounge setting in a public environment.

93

Chair
L 86 D 108 H 78 SH 40 cm

DESIGN : BUSK + HERTZOG

Running out of floor space?
Take your furniture to the next level: Up. ME&U is an upholstered indoor swing hung from the ceiling in a wire. It's a fun and eye-catching accessory that will make you smile. Creates a wonderful atmosphere in lounge areas and lobbies.

Swing
L 62 D 40 H 27 cm



NOLA



DESIGN: CHARLOTTE HØNCKE

Comfortable and cool. NOLA is a series of lounge furniture consisting of an armchair and a sofa perfect for private homes and public spaces. It's created with comfort, simplicity and lightness in mind, which is emphasized by the steel frame and the soft and minimalistic lines of the design. The furniture is designed to look beautiful from all angles and can be placed anywhere in the room – even in small rooms thanks to the petite sizes.

Chair
L 71 D 92 H 93 SH 45/42 cm
Sofa
L 147 D 92 H 93 SH 45/42 cm



Chair
L 100 D 100 H 71 SH 36 cm
Sofa
L 190 D 100 H 71 SH 36 cm
Pouf
L 85 D 67 H 30 SH 30 cm

SAND

DESIGN: JAVIER MORENO

Cutting edge design.
The SAND collection is a cutting-edge design inspired by nature. The main inspiration is the way water transforms and shapes stone over time, and the way sand constantly creates new shapes. The SAND collection is unique and functional furniture that create a comfortable and peaceful setting.



DESIGN: BUSK + HERTZOG

Casual and happy.
ORLANDO is a modern swivel chair in a simple, happy and positive design that suits any room or setting. Choose between the many colours and find one to match your interior design. Minimalistic and comfortable.

Chair
L 80 D 65 H 71 SH 40 cm

ORLANDO





ORLANDO WOOD

DESIGN: BUSK + HERTZOG

A touch of nature. ORLANDO WOOD is available with a light and springy wooden frame that creates a contemporary and inviting look. The chair is comfortable and spacious and matches both modern and vintage furniture perfectly. The innovative finish of how the back meets the seat is a sophisticated detail that calls for the chair to be placed in a spot where it can be seen from all angles.

GOOD DESIGN AWARD 2019

Chair
L 80 D 65 H 74 SH 40 cm
Bench
L 143 D 66 H 74 SH 40 cm

SENSE

DESIGN: BUSK + HERTZOG

An elegant sculpture.
SENSE is a first-class lounge chair with a stylish look.
Modern and minimalistic – and at the same time, comfortable and relaxing. A pleasure to look at and to lounge in.



Relax chair
L 63 D 180 H 73 SH 34 cm
Bed: 180 x 63 cm

DESIGN: MATTHIAS DEMACKER

A cosy, protected feeling.
The upholstered shell of SHELLY embraces you and creates a cosy, protected feeling. Perfect for private and public spaces. The design is minimalistic and classic and will fit in all kinds of interiors.



Chair
L 64 D 52 H 74 SH 46 cm

SHELLY



SILVER



DESIGN: STINE ENGELBRECHTSEN

Snug, minimalistic elegance. The SILVER design lets you create an intimate sitting area and is perfect for private and public spaces. As an extra hidden feature, SILVER is easily converted into a guest bed. Choose between the chair or the sofa in a number of colours and fabrics. The frame comes in steel lacquered in black, white or full gloss chromium.

109



Sofa
L 183 D 86 H 73 SH 38 cm
Bed: 140 x 196 cm
Chair
L 100 D 86 H 73 SH 38 cm
Bed: 56 x 196 cm

CITY

DESIGN: STINE ENGELBRECHTSEN

Chill out and sleep tight.
Single or double? CITY comes in two different sizes and is perfect for a small apartment or a room that needs a functional and relaxing sofa or chair that doubles as a comfortable bed. There are eight backrest positions and a number of colours and fabrics to choose from.



Sofa
L 150 D 98 H 78 SH 41 cm
Bed: 148 x 209 cm
Chair
L 73 D 98 H 78 SH 41 cm
Bed: 73 x 209 cm



VENICE



DESIGN: BUSK + HERTZOG

Fully padded comfort.
A versatile, fully padded lounge chair in a comfy and inviting design equally suited for private and public spaces. The armrest is integrated with the backrest, and together with the oval seat, they make up a uniform design that suits both existing and new furniture depending on the fabric choices.

Chair
L 91 D 72 H 72 SH 42 cm

STANDBY

DESIGN: JAVIER MORENO

Adapts to the situation.
The STANDBY chairs are the perfect place to sit when you're waiting, working, planning or relaxing.
STANDBY is a collection of chairs with different backrest heights designed for various seating situations.
The integrated side tables make the chairs perfect for any space, whether public or private.

Chair low
L 78 D 72 H 68 SH 37 cm
Chair medium
L 78 D 75 H 80 SH 37 cm
Chair high
L 78 D 83 H 92 SH 37 cm
Side table
L 37 D 23 cm



**SOFT
LINE**

SOFTLINE A/S

KIDNAKKEN 5
DK-4930 MARIBO
DENMARK

T: +45 5416 0680

INFO@SOFTLINE.DK

INSTAGRAM: #SOFTLINEFURNITURE

WWW.SOFTLINEFURNITURE.COM

© 2025 SOFTLINE A/S