

SOFT
LINE

OUR VALUES

SOFTLINE has come a long way since we started making furniture in 1979. We have become an international brand by creating innovative, iconic, and high-quality furniture, and our modern, colourful designs can be found all over the world. At SOFTLINE, our roots define our company culture. This is also reflected in our values and how we aspire to do business every day.

INNOVATION AND DESIGN

Always looking forward is embedded in our DNA. Spotting new trends in the way that we live, discovering new materials, developing designs to meet the ever-changing needs of our customers, and continuously investing in new products and technologies are key to SOFTLINE.

QUALITY AND SUSTAINABILITY

We always work to achieve the highest standards of craftsmanship with our skilful staff in the design and production departments at the SOFTLINE factory in Denmark. As a part of our sustainability program, our high-quality products are made to last thanks to our certified materials that meet the highest environmental standards, and we strive to ensure an eco-friendly, sustainable production in line with international standards.

FUNCTIONALITY AND COMFORT

Since the launch of our first sofa bed back in 1979, functionality and effectiveness have been key in the SOFTLINE furniture production. To work with comfort and functionality is an integrated part of the design process, ensuring that the composition of our furniture provides the flexibility and freedom that the modern lifestyle requires.

MADE IN DENMARK

Fair and safe working conditions are a given at SOFTLINE, where we build upon the tradition and heritage of Danish design with nature being a big source of inspiration. We work with talented designers to develop high-quality furniture that people across the world will enjoy living with and using every single day.



INDEX



AIKO
page 48



AIKO SWIVEL
page 49



BASKET
page 50



BASKET POUF
page 52



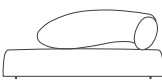
BOOGIE
page 56



CABALA
page 54



CALETO
page 10



CHAT
page 58



CHAT POUF
page 60



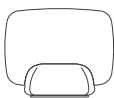
COCO
page 22



COCO SWIVEL
page 24



DIAL
page 62



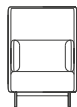
HALO
page 64



HAVANA
page 26



HAVANA SWIVEL
page 28



JOE
page 30



LAKE
page 66



MOAI
page 34



MOAI SWIVEL
page 36



NOOMI
page 38



NOOMI STRING
page 40



NUUK
page 42



OPERA
page 12



OPERA MODULAR
page 14



OPERA POUF
page 16



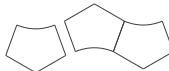
OPERA WALL
page 20



OPERA TABLE
page 18



ORLANDO
page 70



PAUSE
page 68



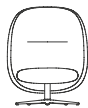
PICOLO
page 46



POUF
page 72



RON
page 74



RUFLE
page 32



SHELLY
page 76



SISTERS
page 44



STANDBY
page 78



XO
page 80

DESIGNERS



Busk + Hertzog



Johannes Steinbauer



Stine Engelbrechtsen



Javier Moreno



Jakob Schenk



Susanne Grönlund



Matthias Demacker



Müller & Wulff



Phillip Bro



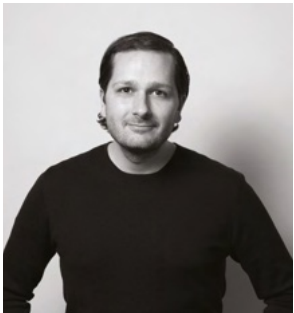
Sascha Sartory



Charlotte Höncke



Robert Zoller



Skrivo



Andreas Lund



Kurt Brandt



Hiromichi Konno



Format



Böttcher & Kaiser



Simon & Jahn



Michiel van der Kley

DESIGN: SASCHA SARTORY

The CALETO chair is designed with a focus on creating an ergonomic backrest support that provides the best possible comfort in various seating positions and user scenarios.

The timeless design is clean and minimalistic and works well in many different environments, like the private dining room, by the desk at home or at the office, in meeting rooms or at restaurants. On the outside of the shell it looks like the upholstery moves in an inch on the lower part, and on the inside of the shell you can see how this detail is translated into a soft and round convex shape that adapts to your back and adds support to your lumbar region. This functional construction of the seat shell creates a light and airy overall appearance. The CALETO chair is available with four different base solutions.

Winner of Green Good Design Award 2023

Chair
L 60 D 54 H 77 SH 47 SD 42 cm





OPERA

DESIGN: BUSK + HERTZOG

A symphony of possibilities. The OPERA sofa and chair is designed with our need for both communication, interaction and privacy in mind. Choose a high or a low backrest depending on the atmosphere you wish to create. OPERA can be used single standing, in traditional seating groups or in larger configurations. A combination of the sofas and the chairs create a fresh and contemporary look.

13

Sofa / High Back
L 148 D 76 H 134 SH 42 cm
Sofa / Low Back
L 148 D 76 H 79 SH 42 cm
Chair / High Back
L 78 D 76 H 134 SH 42 cm
Chair / Low Back
L 78 D 76 H 79 SH 42 cm
Cushion
L 66 D 11 H 47 cm



DESIGN: BUSK + HERTZOG

Compose your own.
OPERA is a modular sofa system with very compact dimensions, perfect even in small spaces. The clean lines and the distinct separation between seat and back make it possible to create a wide variety of fabric- and colour combinations, giving you the freedom to choose a look that suits your personality, budget and space.
See combinations at www.softlinefurniture.com

	Single
L 63 D 67 H 80 SH 42 cm	
	Corner
L 67 D 67 H 80 SH 42 cm	
	Cushion
L 60 D 13 H 43 cm	



OPERA POUF



DESIGN: BUSK + HERTZOG

The complete orchestra. The OPERA poufs reflect the clean, tight look of the entire OPERA line. It comes in three sizes and is a perfect addition to the OPERA sofa or armchair. You can also use them as seats in waiting rooms, as informal meeting seats or create interesting and inviting workspaces in combination with small satellite tables.

Pouf Small
L 70 D 52 H 42 cm
Pouf Medium
L 70 D 70 H 42 cm
Pouf Large
L 140 D 52 H 42 cm

OPERA TABLE

DESIGN: BUSK + HERTZOG

With the addition of a table for the OPERA series, even more functions and possibilities have been added to the flexible and versatile family. The table's design matches the softly rounded corners of the upholstered furniture, and the dimensions of the table top harmonise with the back and sides of the seating furniture. Combined with the OPERA partition wall, intimate and informal meeting rooms can be created. The new table is an important supplement to any group arrangement of the OPERA series' seating furniture with both high and low backrest.



Table dimensions
L 100 D 60 H 70 cm





OPERA WALL

DESIGN: BUSK + HERTZOG

The OPERA collection, which already consists of sofas, armchairs, poufs and a modular system in a number of sizes and variations, has been extended with a partition wall in the same timeless, compact and international design language. With the addition of the partition wall, it is now possible to create smaller areas that are enclosed and shielded, creating a private and defined space that can serve as a room in the room for meetings or for working undisturbed in peace. The partition wall allows for entirely new ways of using and combining the OPERA elements in public spaces, as they connect seamlessly with the OPERA seating elements. This allows you to easily add the partition walls when needed – and efficiently move and store them, as they take up minimal space when not in use.

21



Partition Wall dimensions
L 120 D 29/4,5 H 132 cm

COCO



DESIGN: BUSK + HERTZOG

Versatile elegance.
Sit back and relax in the elegant COCO chair. The defined, rounded lines give this chair a modern look that works perfectly in any setting – private or public. Choose between a number of fabrics and colours to match your interior design and visions.



Chair
L 65 D 73 H 76 SH 40 cm

COCO SWIVEL

DESIGN: BUSK + HERTZOG

Sleek and sophisticated.
The softly rounded armrests and back invite you to have a seat and feel the outstanding comfort of this sleek and sophisticated swivel chair. Casual and cool, COCO SWIVEL suits all kinds of rooms and spaces.



Chair
L 65 D 73 H 76 SH 40 cm



DESIGN : BUSK + HERTZOG

A new classic.
Looking for an iconic armchair for relaxation, contemplation and admiration? HAVANA is like a classic armchair that has been given a super-modern makeover with details and a rounded design that doesn't compromise on comfort. As the name suggests, this chair is synonymous with comfort and warmth – with or without a cigar.

Interior Innovation Award 2014

GOOD DESIGN AWARD 2014



Wing chair
L 79 D 95 H 113 SH 39/35 cm
Low chair
L 79 D 88 H 86 SH 39/35 cm
Footstool
L 58 D 48 H 39 cm

HAVANA





HAVANA SWIVEL

DESIGN : BUSK + HERTZOG

A spinning success.
The highly successful HAVANA wing chair is also available with a swivel base. It captures all the original features and virtues of HAVANA with a dynamic, modern and light design, outstanding comfort and exclusive finish.

GOOD DESIGN AWARD 2014



Wing chair
L 79 D 90 H 113 SH 39/35 cm
Low chair
L 79 D 83 H 86 SH 39/35 cm

JOE



DESIGN: BÖTTCHER AND KAYSER

JOE is a series of soft, flexible seating furniture based on strong shapes, geometric curves, and clear lines. The centrepiece of the series is a circular pouf with slim legs. All seating elements are embraced by a light back wall that serves as a protective shell and creates comfort and privacy for relaxation or private conversations in hotel lobbies, lounge areas, libraries, or modern offices spaces. The soft backrest cushion provides maximum comfort. The family of seating poufs, sofas and armchairs are completed by a matching coffee table with the same floating appearance.

GREEN GOOD DESIGN AWARD 2023

Chair Low Back
L 82 D 78 H 79 SH 45 cm
Chair High Back
L 82 D 78 H 130 SH 45 cm
Sofa Low Back
L 159 D 78 H 79,5 SH 45 cm
Sofa High Back
L 159 D 78 H 130 SH 45 cm
Pouf Small
Ø 74 H 45 cm
Pouf Large
L 149 D 74 H 45 cm
Table Low
Ø 74 H 21,5 cm
Table High
Ø 74 H 31,5 cm

RUFLE



DESIGN: JAVIER MORENO

RUFLE is an elegant and comfortable lounge seating series, that facilitates independent working sessions, conversational groups or a private, peaceful retreat. At the heart of the RUFLE Lounge Collection lies an innovative and captivating geometry that transforms any space into a haven of elegance and comfort. The defining feature of RUFLE is its curvaceous and inviting backrest, carefully designed to create a unique experience of comfort and aesthetics. The gentle, flowing curves of RUFLE's backrest are more than just a visual delight; they cradle your body in a warm embrace, inviting relaxation and repose. This distinctive concave shape isn't just about style; it's a testimony to ergonomic and individual needs.



Chair Medium
L 82 D 73 H 80 SH 40/37 cm
Chair High
L 85 D 82 H 101 SH 40/37 cm

MOAI

DESIGN: PHILIP BRO

Relax and drift away. The large shell of the MOAI chair is inspired by the soft shapes of bricks and stone rolling back and forth on the beach. It's designed to close comfortably around you when you sit in it. A quiet little room on four legs that lets you have a peaceful moment for yourself, created for privacy with optimum acoustics.

The distinctive notches around the armrest add personality and act as comfortable support when you're getting up. From the side, the MOAI chair has a unique and slightly naive expression that's reminiscent of the massive sculptures of faces on Easter Island.

GOOD DESIGN AWARD 2017

GERMAN DESIGN AWARD 2018

Lounge chair
L 89 D 81 H 125 SH 45 cm
Sofa
L 149 D 81 H 125 SH 45 cm

MOAI SWIVEL

DESIGN: PHILIP BRO

Elegant and sculptural
MOAI also comes with an elegant swivel base.
The chair is designed to close comfortably around you
and acts as a small room that allows you to enjoy a
moment of peace and contemplating.
From the side, the MOAI chair has a unique and slight-
ly naive expression reminiscent of the massive sculp-
tures of faces on Easter Island.

GOOD DESIGN AWARD 2017

GERMAN DESIGN AWARD 2018

Swivel chair
L 89 D 81 H 125 SH 45 cm



NOOMI SWIVEL



DESIGN : SUSANNE GRØNLUND

Elegant lounge chair.
NOOMI is a modern chair with a classic feel. The soft, simple look and understated, inviting elegance have clear references to the Scandinavian design tradition. NOOMI is designed for both public and private spaces and adds comfort and elegance.

39

Swivel Chair
L 84 D 71 H 90 / SH 45 cm
Footstool
L 53 D 37 H 41 SH 39 cm



NOOMI STRING

DESIGN: SUSANNE GRÖNLUND

Growing into something new. With references to branches on a tree, the delicate and slightly bent legs seize the upper part of the chair and create a strong graphic expression. The frame is light, but distinctive with a modern shape that almost makes the soft, rounded upper part of the chair look like it's hovering above the floor. An ultra-modern chair where steel and fabric meet in a harmonic and organic whole.

GOOD DESIGN AWARD 2017

GERMAN DESIGN AWARD 2018

Chair
L 84 D 76 H 90 SH 41/45 cm

DESIGN: BUSK + HERTZOG

Have a seat.

NUUK is an extremely versatile and comfortable chair. With integrated armrests in organic shapes and light, yet characteristic frame, it works equally well as a dining room chair and as a guest chair in the office.

The size and shape of the armrest make the chair practical and suitable for a table, while providing lots of comfort for sitting and working. The chair is shaped to be welcoming and is made in a durable, modern design.

GOOD DESIGN AWARD 2019

Chair
L 61 D 62 H 82 SH 50/48 cm

NUUK





SISTERS

DESIGN: BUSK + HERTZOG

Four elements connected. SISTERS is a unique collection of sculptural and versatile poufs and sitting units. They are designed without a particular "direction" and can be placed freely in the surrounding environment, giving you unlimited creativity to play around with the design. The design is soft, light and organic, they come in four sizes that can be combined or used alone. The largest size has a comfortable backrest, which makes it perfect for installations in large waiting areas and public spaces.

GOOD DESIGN AWARD 2017



- Small
L 100 D 78 H 42 SH 42 cm
- Medium
L 129 D 111 H 42 SH 42 cm
- Large
L 166 D 120 H 42 SH 42 cm
- Large with backrest
L 166 D 120 H 74 SH 42 cm

DESIGN: SASCHA SARTORY

At your service.

The round and welcoming shape of the PICOLO lounge chair invites you to sit down and relax. It offers maximum comfort in a contemporary and minimalistic design that suits all kinds of environments. Even a small room can fit this compact and versatile lounge chair that will be an elegant addition to the interior design. The seat is upholstered with high-quality foam placed inside a sleek steel frame that also holds the soft backrest.

Chair
L 79 D 70 H 67 SH 40 cm

PICOLO



AIKO

DESIGN: SUSANNE GRØNLUND

Elegant and light.
The AIKO armchair is an all-round lounge, dining or conference chair that will add a touch of elegance in homes and public spaces alike. The chair is available with a swivel base that brings out the clean lines and simplicity of the design. The seat is in an all-enveloping design, and the lines of the chair make AIKO incredibly comfortable. A popular chair and a classic design in the SOFTLINE collection.



Lounge Chair
L 64 D 58 H 70 SH 45 cm
Conference Chair
L 64 D 58 H 75 SH 50 cm
Swivel Chair
L 64 D 55 H 75 SH 50 cm

BASKET

DESIGN: MATTHIAS DEMACKER

Colourful beach baskets

Inspired by functional beach baskets, BASKET is designed as an integrated modular system with two different back heights. This allows you to customize and design your seating just the way you like it. The intelligent sofa is a great setting for an intimate and cosy time alone – or with friends, family or colleagues. The BASKET armchair comes with a swivel or fixed base. The BASKET poufs can be used as a footrest or a side table.

Chair Low Back

L 90 D 74 H 93 SH 42 cm

Chair High Back

L 95 D 74 H 126 SH 42 cm

Swivel Chair Low Back

L 90 D 74 H 93 SH 42 cm

Swivel Chair High Back

L 95 D 74 H 126 SH 42 cm

Sofa Low Back

L 147 D 74 H 93 SH 42 cm

Sofa High Back

L 152 D 74 H 126 SH 42 cm



BASKET POUF

DESIGN: MATTHIAS DEMACKER

Colourful beach baskets
Inspired by functional beach baskets, BASKET is designed as an integrated modular system with two different back heights. This allows you to customize and design your seating just the way you like it. The intelligent sofa is a great setting for an intimate and cosy time alone – or with friends, family or colleagues. The BASKET armchair comes with a swivel or fixed base. The BASKET poufs can be used as a footrest or a side table.



Pouf Small
L 84 D 50 H 42 SH 42 cm
Pouf Large
L 142 D 50 H 42 SH 42 cm





CABALA

DESIGN: MÜLLER & WULFF

Arrange it your way.
CABALA is an intelligent module sofa program with
endless possibilities of arranging and grouping.

With a unique feature, the seat orientation can be
changed in an instant, and it's possible to create two
different seating directions at once – e.g. one to the
window and one to the fireplace, TV or art piece. You
simply push or pull the backrest gently to make it flip
to one side or the other. This integrated feature makes
it possible to sit on both sides of the base depending
on how the backrest is arranged.

This diversity makes CABALA perfect for hotels, mu-
seums, waiting areas and of course living rooms. The
round corners of the designs create a distinct look
with a modern edge, and the high-quality upholstery
details complete the look.

GOOD DESIGN AWARD 2018

Sofa element
L 99 D 99 H 78 SH 40 cm
Pouf
L 99 D 99 H 40 SH 40 cm

BOGGIE

DESIGN: BUSK + HERTZOG

Useful and dynamic table.
This small and charming satellite table is extremely useful in any setting. The design makes it possible to position it over the seat of a chair or a sofa and comes in handy for your coffee mug, iPad or book. The table also works great as an organizing table in the hall or as a bedside table in the bedroom. The springy legs and energetic design creates a positive feel and a stylish look in any room.

Ø 45 H 56 cm





CHAT

DESIGN: HIROMICHI KONNO

A sculpture to relax in. CHAT is designed to provide the perfect setting for people to sit and have a chat, but there are many more ways to use it. The design combines the elegant, organic round shape of the backrest with the cubic lines of the seating element for a sculptural look. The top quality materials make the comfort superb.

Sofa
L 210 D 100 H 85 SH 39 cm
Chair
L 120 D 100 H 79 SH 39 cm

CHAT POUF

DESIGN: HIROMICHI KONNO

A sculpture to relax in.
CHAT is designed to provide the perfect setting for people to sit and have a chat, but there are many more ways to use it. The design combines the elegant, organic round shape of the backrest with the cubic lines of the seating element for a sculptural look. The top quality materials make the comfort superb.

Pouf Small
Ø 100 L 90 D 80 H 37 cm
Pouf Large
Ø 140 L 130 D 114 H 42 cm



DIAL



DESIGN : BUSK + HERTZOG

DIAL is inspired by an old school telephone booth, and the innovative design meets the continuously increasing need for being "private in public". DIAL can help create the physical and mental private room in public spaces necessary in order to relax and concentrate on what is important in the moment – be it a Skype call with a colleague, FaceTime with a loved one or simply just the need to close your eyes for at moment and focus on the upcoming task, travel or an important meeting.

DIAL is fully upholstered on the inside and outside, making it soft and inviting, and depending of the choice of fabric it can be customised to suit all kinds of environments in public spaces.

Winner of Green Good Design Award 2023



Phone Booth
L 84,5 D 66,5 H 59 cm

HALO

DESIGN: SKRIVO

All around you.

The HALO seating system allows you to mix and match different backrest elements to create a variety of seating configurations, ranging from a single-seat chair, a public seating system or a three-seat sofa. The main feature is a very large backrest – reminiscent of a saint's halo – that can provide additional comfort, but also creates privacy and improves acoustics without having to shut off the world entirely.

Chair

L 125 D 87 H 109 SH 39 cm

Sofa

L 242 D 87 H 109 SH 39 cm



LAKE

DESIGN: BUSK + HERTZOG

A graphic touch.

LAKE is an asymmetrical pouf with a characteristic and easily recognizable design that makes it stand out as an individual design element in the decor. At the same time, LAKE is designed to work together in groups with great effect. Together the poufs create a practical seating area with an interesting, graphic look – useful in private homes as well as public spaces.

Pouf

L 63 D 52 H 40 SH 40 cm





PAUSE

DESIGN: SIMON & JAHN

Press pause and have fun. PAUSE is a pouf that can be used alone or combined in groups of three or more for work and play. A flexible and comfortable item with removable covers in many colours. There are endless ways to use PAUSE in schools, kindergartens, workplaces, recreation centres and private homes. Be creative and have fun.

69

Pouf
L 65 D 53 H 42 SH 42 cm

DESIGN: BUSK + HERTZOG

Casual and happy.
ORLANDO is a modern swivel chair in a simple, happy and positive design that suits any room or setting. Choose between the many colours and find one to match your interior design. Minimalistic and comfortable.

Chair
L 80 D 65 H 71 SH 40 cm

ORLANDO





POUF

DESIGN: SOFTLINE DESIGN TEAM

Sculptural cubes for any room.
With these decorative poufs you always have an extra
comfortable seat at hand.
Choose the colours and fabrics that you like to create
a personal interior design.

73

Pouf
L 40 D 40 H 47 SH 47 cm

RON

DESIGN : SASCHA SARTORY

Open and dynamic spaces need flexible seating solutions. Like RON for example; a small upholstered pouf/stool that is a must-have in situations where additional seating is needed. The design is inspired by thimbles, and the conical shape with a hollow inside allows for easy stacking and space-saving storage. An elliptical ergonomic cut-out on the top surface allows you to carry the lightweight pouf around easily and move it as needed. The clean and elegant overall appearance blends well with many different spaces like offices, common areas and hotels, but RON will also be a functional and aesthetically pleasing addition to the interior in private homes.



Pouf
Ø 55 H 47 SH 47 SD 35 cm



DESIGN: MATTHIAS DEMACKER

A cosy, protected feeling.
The upholstered shell of SHELLY embraces you and creates a cosy, protected feeling. Perfect for private and public spaces. The design is minimalistic and classic and will fit in all kinds of interiors.



Chair
L 64 D 52 H 74 SH 46 cm

SHELLY





STANDBY

DESIGN: JAVIER MORENO

Adapts to the situation.
The STANDBY chairs are the perfect place to sit when
you're waiting, working, planning or relaxing.
STANDBY is a collection of chairs with different bac-
krest heights designed for various seating situations.
The integrated side tables make the chairs perfect for
any space, whether public or private.

79

Chair low
L 78 D 72 H 68 SH 37 cm
Chair medium
L 78 D 75 H 80 SH 37 cm
Chair high
L 78 D 83 H 92 SH 37 cm
Side table
L 37 D 23 cm



Table trapez
L 52,5 D 40 H 56/76 cm
Table square
L 40 D 40 H 56/76 cm
Table round
Ø 43.5 H 56/76 cm

NUUK Chair see page 30

XO

DESIGN: BUSK + HERTZOG

Your perfect sidekick.
XO tables are airy and elegant. Choose between the XO with a fixed height or the adjustable version. The asymmetrical placement of the table leg allows the table to be placed over the seating area of almost any sofa or chair imaginable. The shape of the tabletop is designed to match different user scenarios depending on if you need at the side table or a work table for your iPad or laptop. On the height-adjustable version, the height of the table can be adjusted in one move.



