



EMPOWERING
SPACES TO

MEET SOCIALISE WORK MANAGE

OFFICE

Smart solutions for dynamic and flexible working environments

**BACH
MANN**
We power your life.

CONTENTS

A working day with BACHMANN	04
Overview of the work environments	06
Desk sharing	08
Touchdown area	10
Agile room/training room	12
Huddle room	14
Meeting room	16
Lounge/reception area	18
Silent booth	20
Kitchen/break-out area	22
Home office	24
Product overview	26



Empowering spaces to work

Desk sharing, teamwork and agile working, regardless of time or place, are being implemented for employees and employers alike, preferably in an atmosphere that fosters well-being. Suitable surroundings and appropriate equipment are becoming more and more important for working efficiently and productively. These new ways of working require building and workplace infrastructures to be adapted to our modern day-to-day life. These include, for example, flexible work and presentation tools, and new office and room concepts. A change that in the medium-term leads to greater satisfaction

and an increase in the quality of work, and that saves companies' resources and costs in the long run. Thanks to our in-depth research and development in the field of workspace areas, we are already able to provide innovative technologies enabling companies to best meet the requirements of tomorrow and beyond. We provide you with intelligent systems that offer superior added value. At BACHMANN, users are at the forefront. Our solutions are intuitive and flexible. They impress with their modern design

and high functionality. They ensure that you can work perfectly, at any time and anywhere.

We are convinced that you can improve your performance whether you are logging into a virtual meeting or completing work at your desk. Your working life just got a whole lot better – welcome to the future of working with BACHMANN.

Peter Bachmann | CEO

A WORKING DAY WITH BACHMANN

In the post-pandemic era, we are returning to the office with new expectations, because the traditional definition of individual workspaces has fundamentally changed. Working from home and mobile working have become an integral part of our working world. The office has taken on an entirely new meaning. It is now a meeting place, a place for concentrated work, and also for activity-based working.

The future world of work will be largely defined by the availability and use of technology. Modern offices

must be flexible and equipped with technological solutions that cover the entire range of modern ways of working and that integrate hybrid teams.

Office users require simple and readily available power and data connections, which is putting greater demand on existing infrastructure. That is why we have developed our products and solutions to enable the transition to a state-of-the-art and future-viable office through retrofitting.



The office is characterised by different environments

While office landscapes in the past were characterised by open-plan concepts and formal meeting rooms, state-of-the-art office worlds are characterised by a variety of different work environments. Dynamic spaces, such as huddle rooms, room-in-room systems and informal lounges, support different work environments, ranging from deep concentration through to active collaboration.

Seamless communication is now expected during hybrid meetings. As a part of this transition, digital solutions have played a central role in the configuration of these areas.

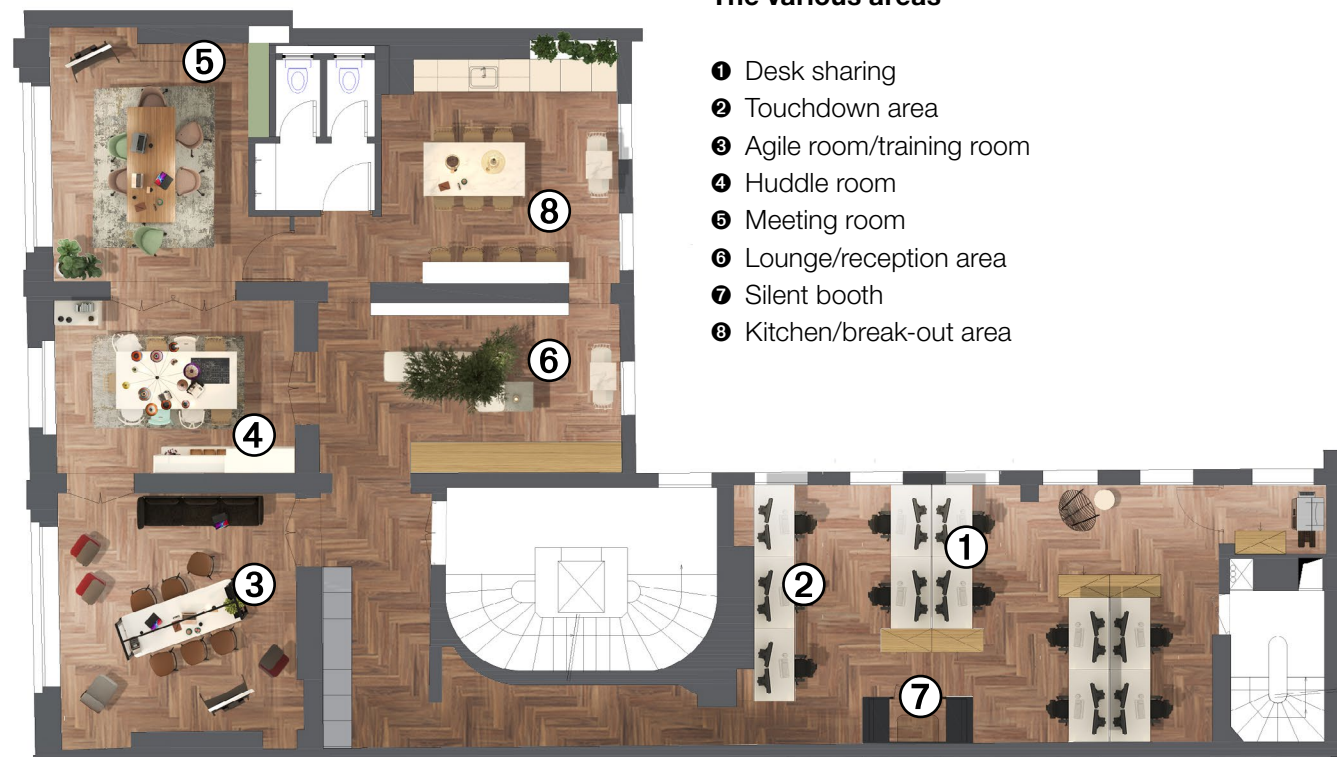
Multimodal environments

Multimodal environments place the focus on flexibility, collaboration and well-being in the everyday working world. Here, innovative technologies are the key to success, because they can transform a range of workplaces into inspiring places of work that promote productivity and creativity.

A flexible technical configuration in these areas creates a whole new level of freedom to enable more integrative working methods.

OVERVIEW OF THE WORK ENVIRONMENTS

Identifying new working areas



The various areas

- ❶ Desk sharing
- ❷ Touchdown area
- ❸ Agile room/training room
- ❹ Huddle room
- ❺ Meeting room
- ❻ Lounge/reception area
- ❼ Silent booth
- ❽ Kitchen/break-out area

The key to creating an office ecosystem is finding the right mix and balance.

While personal workspaces are important areas for focused work and an integral part of a healthy office ecosystem, spaces for collaborative work are just as important. Therefore, having a balanced mix of different work areas for individuals and

teams is crucial. Teams working in different spaces require solutions for interacting virtually. This puts different demands on the work areas in an office ecosystem in order to create a solid foundation for the hybrid working world of the future.



The new BACHMANN showroom was opened in the heart of Paris with the motto "BACHMANN illumine Paris". It is a place of inspiration and shows how modern office environments can have a flexible and versatile design to meet New Work requirements.

The showroom features a variety of room concepts that promote both employees' individual needs and the requirements for collaborative work. Everyone will find their own personal workspace, whether in inspiring meeting rooms and cosy huddle rooms for concentrated work, open desk-sharing areas for collaborative work or in a large conference room for giving presentations

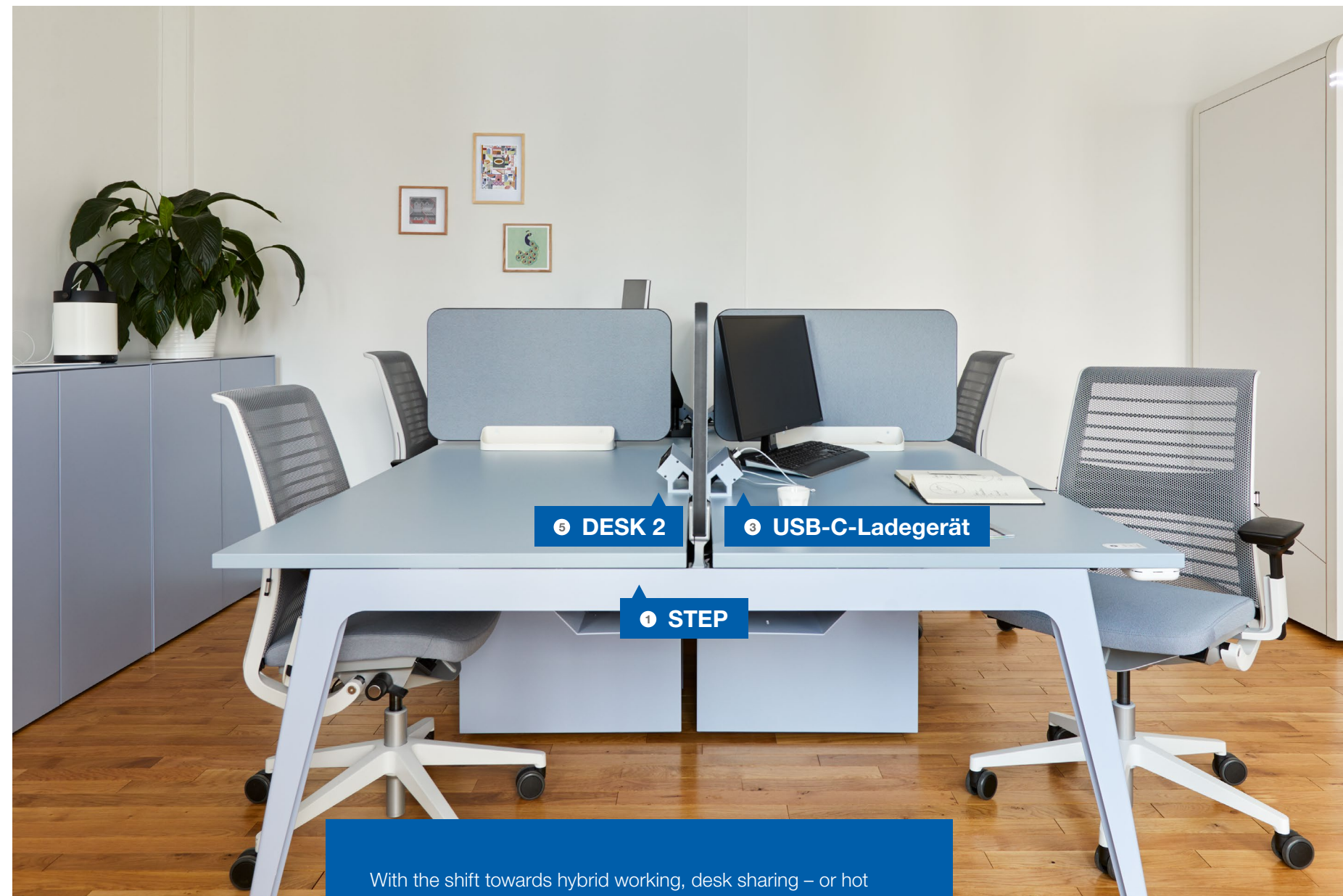
Take inspiration from the images of our Paris showroom. They illustrate how you can use our products in various work environments and how they can help to create productive and inspiring working environments.

Are you ready for the working world of tomorrow? Then visit us at one of our showrooms in Paris, London, Stuttgart or Giessen (The Netherlands) and experience firsthand the future of work. Send us an email to events@bachmann.com and book your appointment now!



DESK SHARING

Embrace the freedom of unassigned seating

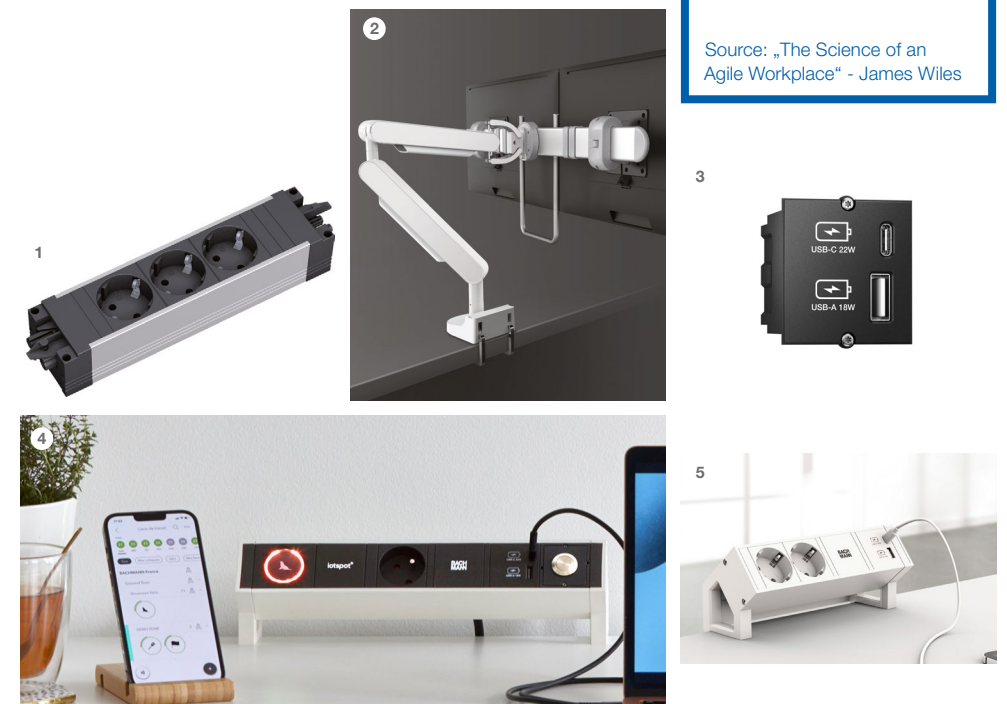


With the shift towards hybrid working, desk sharing – or hot desking – has become standard practice. But the smooth-running of a shared environment is dependent on the shareability of its tools. We developed our booking system to help people find their ideal workspot for the day, an adjustable monitor arm to create a comfortable environment for everyone, and adaptable charging stations that leave nobody without the power they need.

50%

of office seats are always unoccupied at any one point in time during an average workday.

Source: „The Science of an Agile Workplace“ - James Wiles



- 1 More permanent power connections can be concealed under-table with our **STEP** system. Fitted with power in and out installation connectors, regulation-conforming daisy chaining is possible.
- 2 Our **ZG1 Monitor Arm** with **ZGX crossbar** enhances your workspace and improves wellbeing. Designed to support two monitors, its position can be easily adjusted to suit personal preferences.
- 3 Our **USB-C chargers** are fully Power Delivery (PD) conform and are offering the perfect charging current and power to PD mobile devices, such as smartphones, tablets and laptops.
- 4 Being able to optimise space capacity, monitor resources and adapt hybrid work along with business needs is essential. BACHMANN offers a simple solution with **iotspot**, a Smart Workplace Platform to support hybrid working for organisations and workers.
- 5 In desk sharing environments it is crucial to have easy and fast access to power and data connectivity. On-desk solutions, like our **DESK 2** offer easy accessibility.

TOUCHDOWN AREA

Fleeting workspaces with efficient technology

80%

of workers would be more loyal to their employers if they offered flexible work options.

Source: Flexjob survey

Touchdown areas are a key component of any agile workspace – they are used by working nomads that are looking for a workplace from a couple of minutes to a few hours. In these short-term workspaces, it's particularly important to offer a fast and simple setup with easy access to power and charging points, flexible monitor options and wireless connectivity.



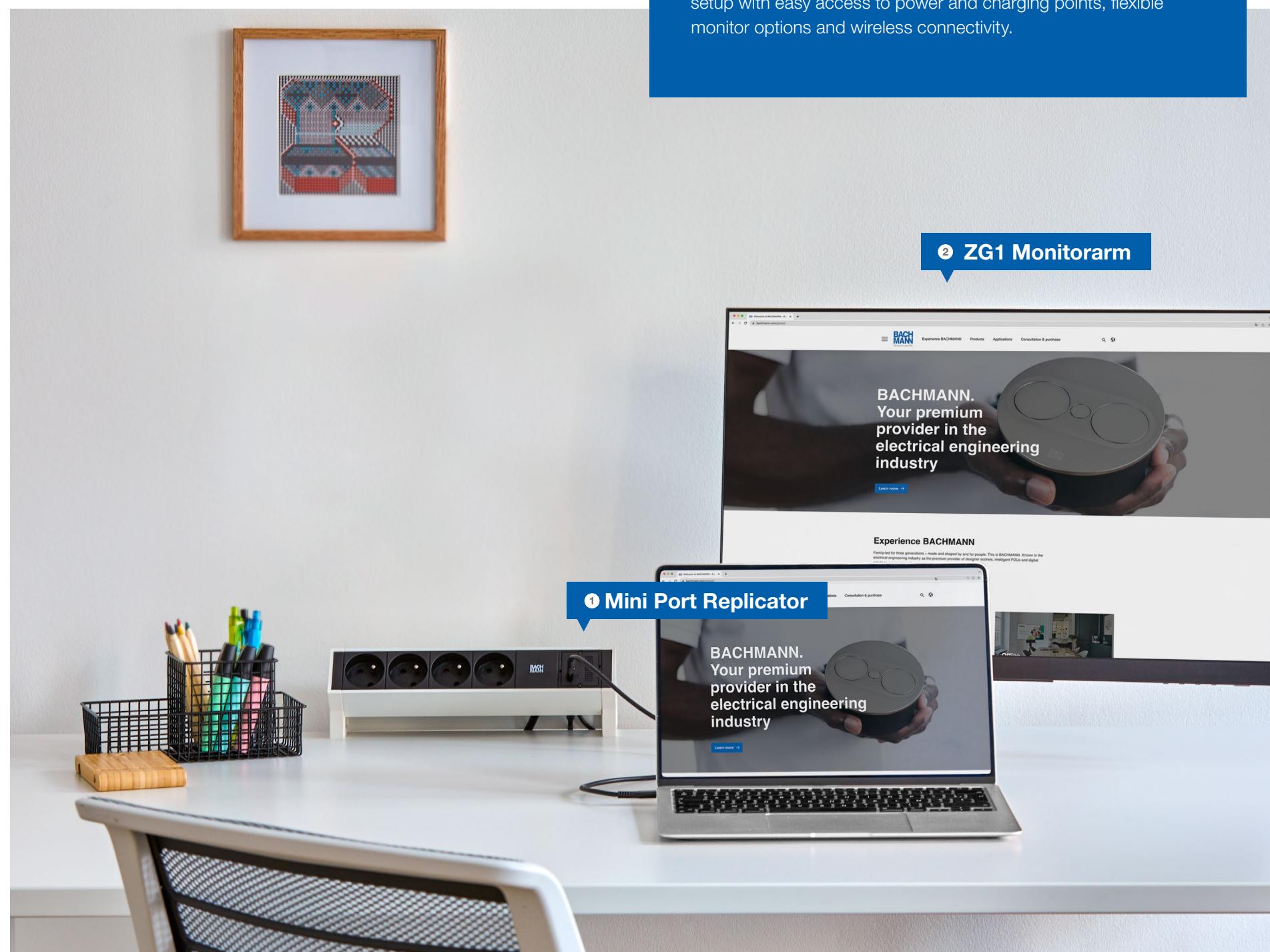
1 Internet connection, power supply, screen connection – the Custom Module **Mini Port Replicator** bundles everything a laptop needs into a single USB-C connection. Ready to get integrated in one of our connection panel, like the DESK 2.

2 Our ergonomic **ZG1 Monitor Arm** can support screens of up to 17-34 inches and 11 kg, including curved monitors.

4 **KAPSA** is a real space saver with its flushed, slick and stylish integration to any top surface. The flip-flap lid provides protection against external influences, is available in several versions and can get exchanged easily.

3 Our wireless Qi charger **Aircharge** features a fast-charging function that will power up your smartphone in less time.

5 **LOOP IN CHARGE:** Our answer to clean desk solutions in the modern office.

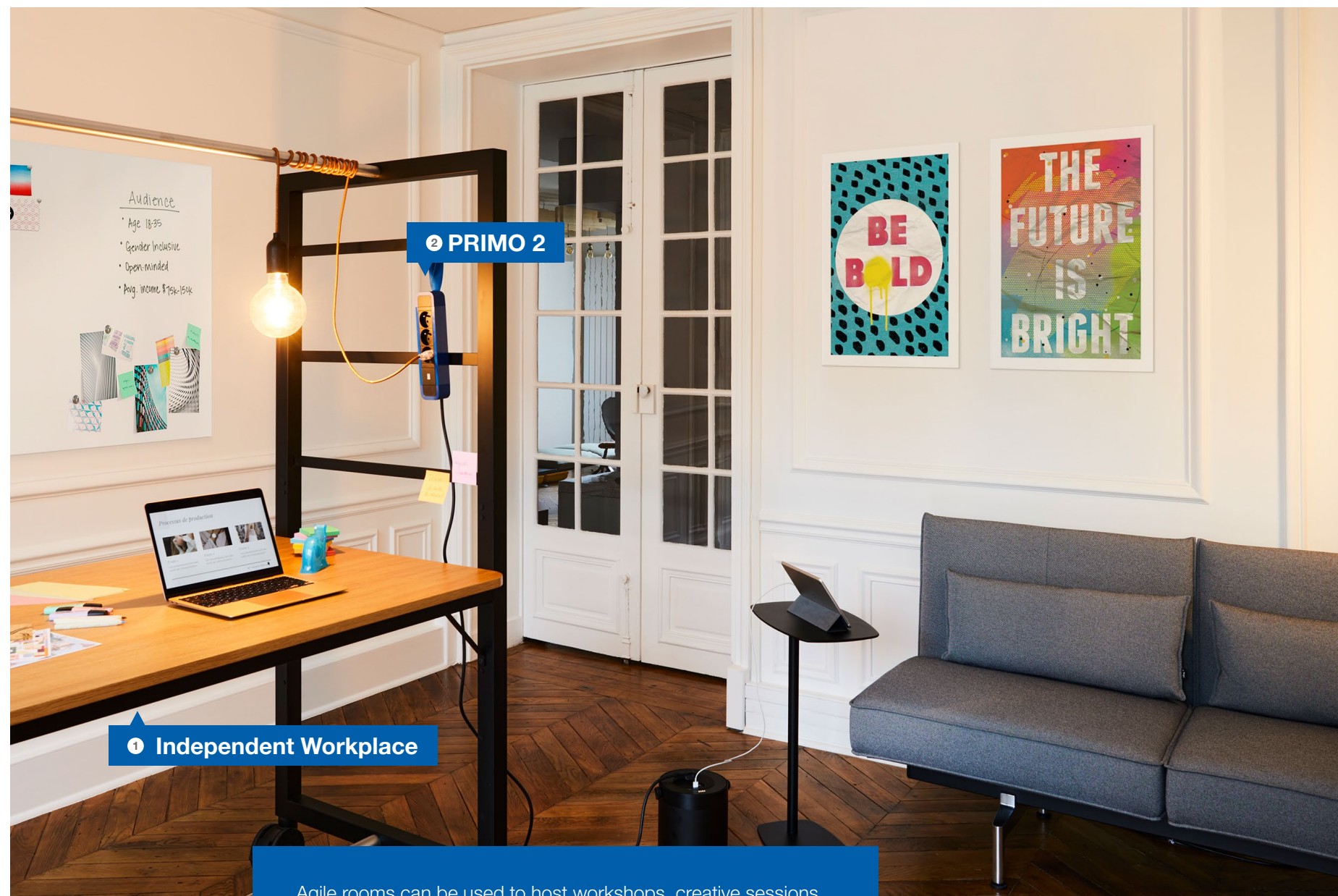


2 ZG1 Monitorarm

1 Mini Port Replicator

AGILE ROOM/ TRAINING ROOM

Flexible spaces for collaboration

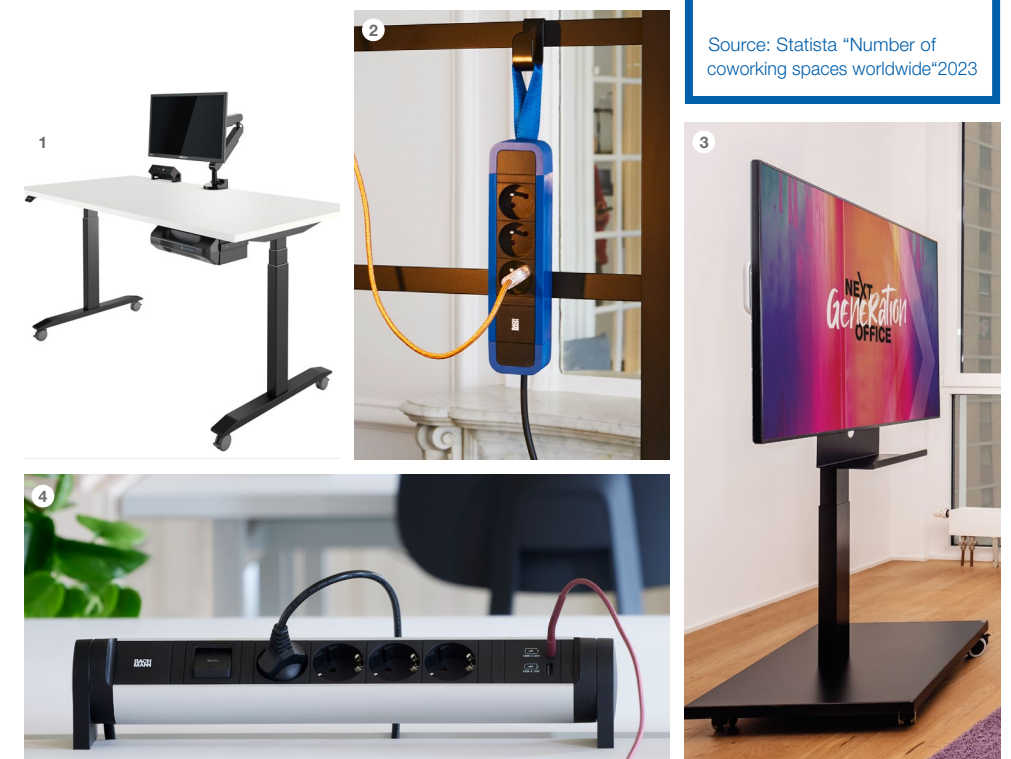


Agile rooms can be used to host workshops, creative sessions and team meetings. But to help these spaces to be as flexible as they need to be, you need special technical solutions. Adjustable sit-stand desks, battery powered monitors, mobile charging stations and power strips that can be easily integrated with soft furnishings are all part of our offering.

69%

of office workers say they are more productive when they can work in a variety of settings during the workday.

Source: Statista "Number of coworking spaces worldwide" 2023



1 Our **Independent Workplace** kit helps desks and meeting tables to become agile, with battery powering for laptops, tablets, smartphones and external monitors as well as height-adjustment.

2 **PRIMO 2** is our premium socket strip. The contemporary design, which comes in blue, black and green, features an optional hanging loop for mobile furniture solutions.

3 Thanks to its integrated battery, our **Independent Monitor** can be used anywhere it's needed, without the need for access to mains power.

4 **CYCLE** is not only environmental friendly due to a plastic compound using corn oil, but offers the possibility to change the product application during its lifetime. The end caps are exchangeable so you can transfer the product from a fixed one, to a mobile one, or even to one offering a hanging loop.

HUDDLE ROOM

Small but powerful

11%

of meetings are productive. Smaller collaboration spaces engage for more outcomes and productivity!

Source: Zippia



1 We developed our **Custom Modules** to offer a range of flexible data and media connections. With our modular options you can update your connection panel whenever needed.



2 With **MOV:E** the name says it all. This XXL energy store, offering **USB-A, USB-C**, or even a **230 V German type socket**, brings power exactly where it is needed.



3 Switch between the office conference system and your own device with our **OCHNO** Power Conference. Offering USB-C connectors for content sharing and charging, and being compatible with all popular collaboration tools like Microsoft Teams, Zoom and Webex, Ochno raises the meeting quality to a whole new level.

4 Functional, beautiful and reliable, our **CONI** concealed power strip is one of our best-loved products for a reason. The mechanism and lid conceal your personalised power strip within your furniture, creating a seamless surface when closed.



Huddle rooms are the new meeting rooms. The difference: huddle spaces have limited capacity and are set up with the latest technology to support hybrid meetings. There are some key tools to have in your arsenal for seamless connectivity between remote and face-to-face members of the meeting, from effortless conferencing systems to high-performance media cables.

MEETING ROOM

A quiet collaborative space to provide privacy and confidentiality



2 POWER FRAME COVER

5 TOP FRAME

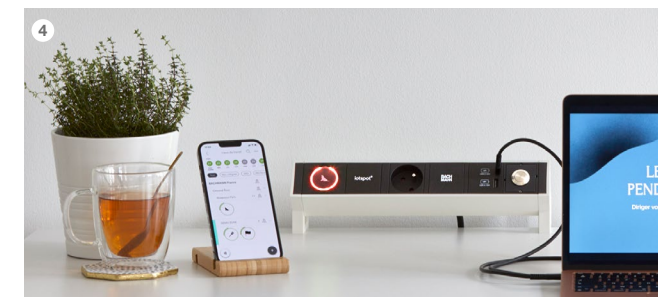
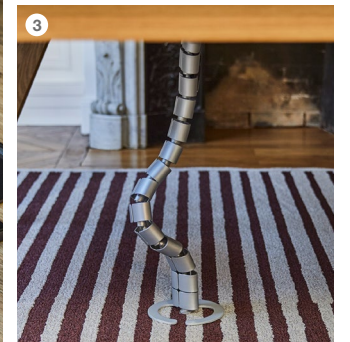
3 Cable Snake®

In addition to being welcoming and comfortable, meeting rooms need to be equipped with hassle-free technology. Agile booking systems, safe and tidy cable management, and access to power where and when you need it are non negotiable.

58%

of employees report that their meetings last over 30 min.

Source: Zippia



1 Our **60 W USB-C Charger** provides enough power to charge laptops as well as smaller devices.

2 You can hide unused sockets with our **POWER FRAME COVER**. When opened, the cover lies flat against the surface to allow easy access from both sides of the meeting table.

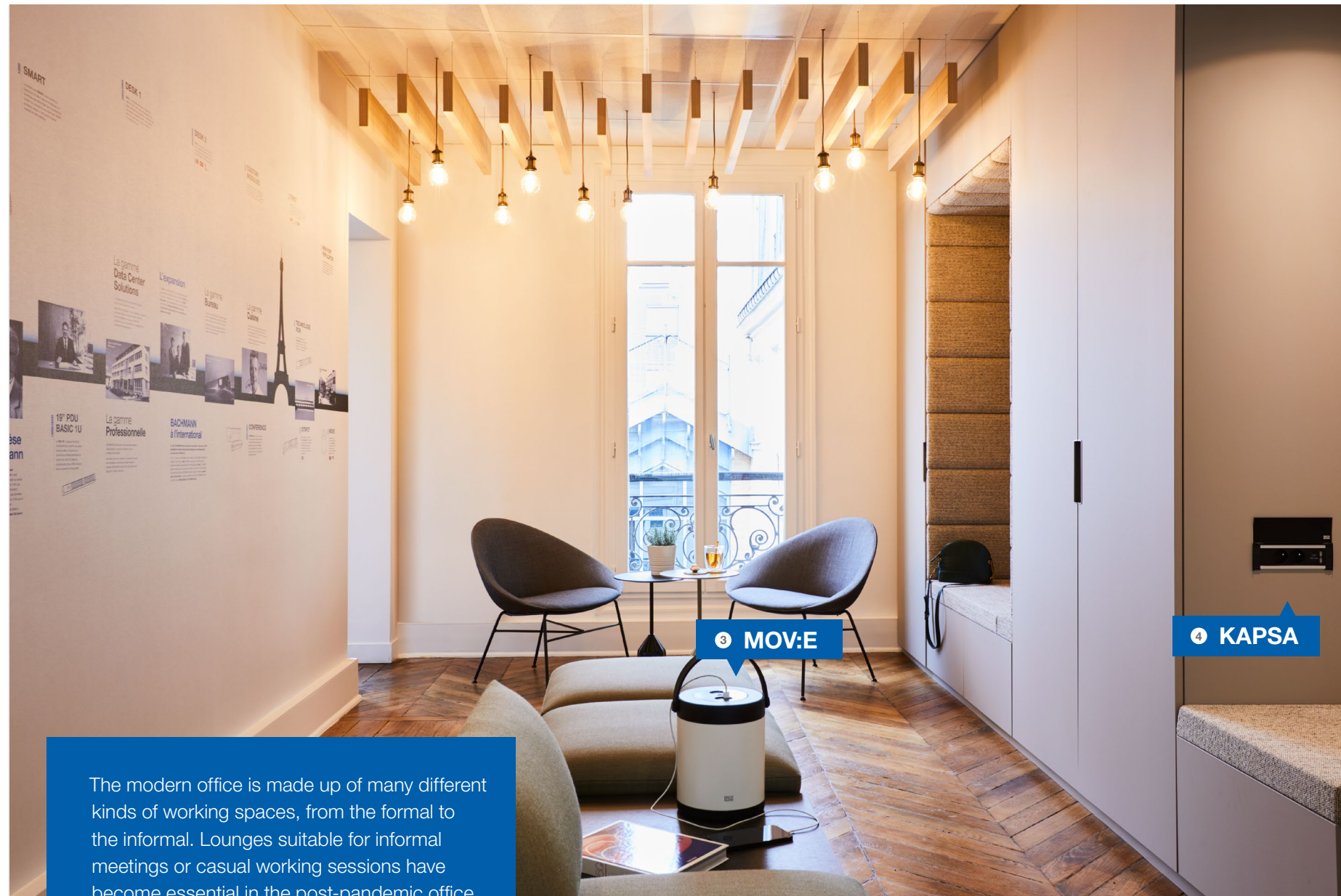
3 **Cable snake®** Our system Cable Snake® offers a clean and safe cable routing upon the floor and up to the desk. Choose out of the various versions and colors the one with the best match to your furniture.

4 Our **iotspot** smart workplace platform allows you to easily find and book a meeting room via App, webportal or Outlook, ensuring these valuable spaces are used as efficiently as possible.

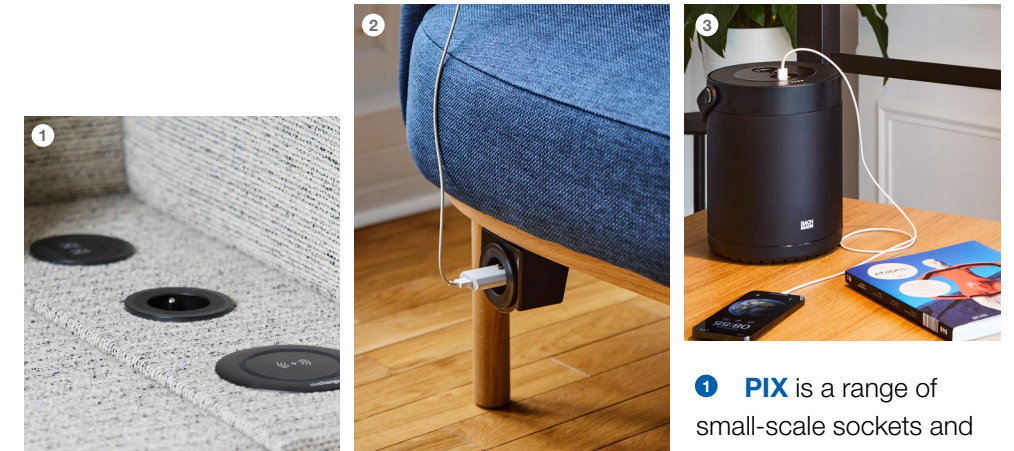
5 The frameless **TOP FRAME** is our most elegant solution to add connectivity to high-end meeting tables.

LOUNGE/ WELCOME AREA

A place to greet or take a pause



The modern office is made up of many different kinds of working spaces, from the formal to the informal. Lounges suitable for informal meetings or casual working sessions have become essential in the post-pandemic office. Lounges and receptions frequently take cues from the home, hospitality and wellness spaces, and their homely and inviting atmosphere demands power solutions to match.



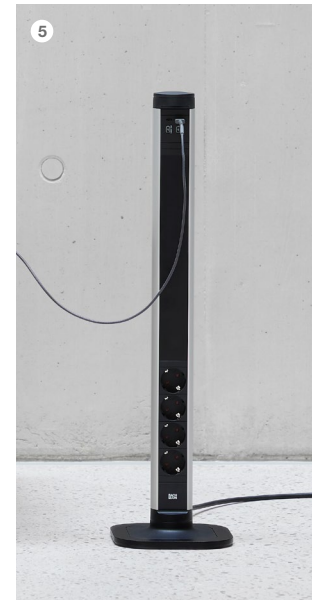
1 **PIX** is a range of small-scale sockets and connection units that can bring discreet power to lounge and reception areas where fewer options are required. The round unit is available with a swivel mounted cover.



34%

of workers prefer working from lounge areas.

Source: Gebesa



2 Our **PIX HOLDER** allows you to securely mount up to two Pix units to sofas and soft seating areas.

3 Charge your phone or laptop even where there is no mains connection with our **MOV:E** portable power supply. The unit, which has a 230 Wh lithium-ion battery, can power multiple laptops and charge smartphones at the same time.

4 Our **KAPSA** power strip is designed to be integrated into desks, cabinets and partition walls. Its lid hides the sockets when not in use and is available in a range of finishes to match the design of your space.

5 **CYCLE** Pole is a free-standing power pole, bringing power and USB charging in an elegant and flexible way in every lounge.

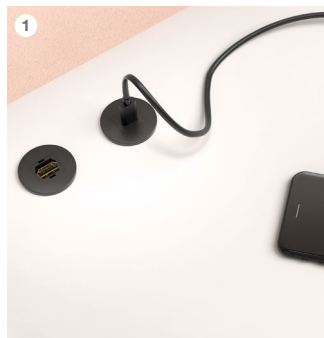
SILENT BOOTH

Focused space within busy offices

85%

of the workers today say they have difficulty concentrating.

Source: Steelcase and Microsoft, 2017



1 MINI PIX is our power solution with the smallest footprint yet. The 35 mm port can be inserted into any surface to offer a single power point. The MINI PIX is compatible with all of our Keystone Modules, including USB-A and -C sockets.



2 POWER FRAME is an ideal solution for spaces short on space. Easily accessible connections can be mounted into the desktop or installed into the Silent booth partition walls to save space.



3 With our **Independent Workplace** system kit you can create a private booth even without a mains power supply. Our battery systems offer charging solutions for mobile devices and integrated lighting, allowing you to create a truly independent space anywhere in your office.



4 With our **iotspot** presence sensors booth occupation gets detected immediately. The occupancy status will be shown in realtime within the App, the webportal, in Outlook and on the illuminated iotspot module. It's a real timesaver when it comes to finding the right place to work.

Silent booths offer a retreat from the open-plan office for confidential meetings, concentrated working or phone calls. Streamlined appliances maximise these small spaces and help to keep them clutter-free. You don't need all the power points of a typical desk, so think about single power points for phone, tablet and laptop charging, and about solutions that hide away access when not needed.



4 iotspot

2 POWER FRAME

KITCHEN/ BREAK-OUT AREA

Informal and social spaces are where ideas collide and emerge

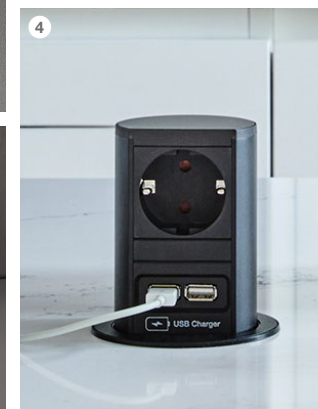


Simple power adjustments can improve the versatility of kitchen and break-out areas, and reduce unnecessary meeting room use. In areas with limited space, consider vertical, concealed, or wireless power points that offer flexibility and instant connectivity. Quick and easy access to power supports the need for spontaneous collaboration.

91%

of employees say it is important to have a space where they can recharge and re-energise.

Source: Steelcase Research



1 TWIST is a perfect compact power solution for kitchens short on worktop space, providing plug sockets and optional USB-A and USB-C charging ports. After use, simply rotate the cover to conceal the outlets.

2 We expect to be able to use our mobile devices everywhere, so make charging possibilities a reality everywhere too with our integrated **USB Chargers**.

3 Our **CASIA 2** power strip can be installed horizontally or vertically. The chamfered edges make it ideal for vertical mounting in disused corners. The unit can be tailored to include a USB charging point alongside standard power sockets.

4 ELEVATOR is ideal for integrating power and data connections in tiny spaces. Simply push to raise or lower the power strip, which is installed below your worksurface.

HOME OFFICE

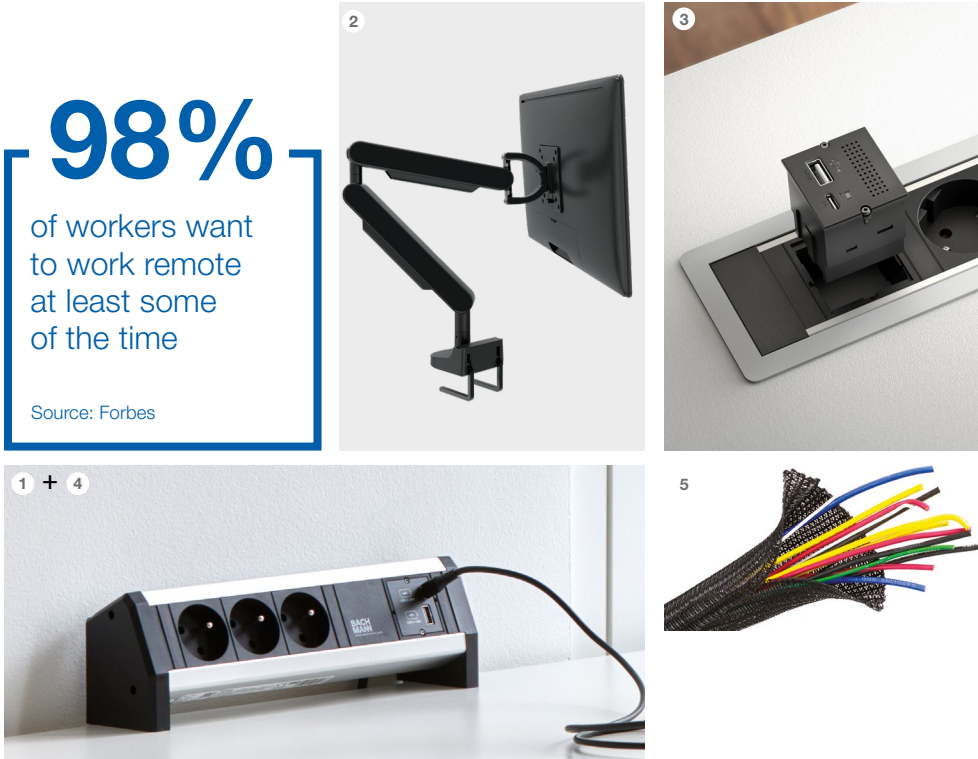
When work happens even at home



2 USB-C Charger

4 DESK 1

Hybrid and remote working are the new standard, with most people now used to working at least some days each week from home. This new-found flexibility is a huge perk and while it's likely everyone has a table and desk at home, there's more to a well-equipped office. Ergonomic support, safe cable management and convenient power supply are all vital for a comfortable and healthy home-working set-up.

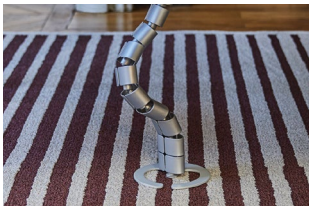


98%
of workers want to work remote at least some of the time
Source: Forbes

- 1 Our smartphones come everywhere with us, so you'll want to be able to charge it quickly and effectively in your home office. Our **USB-C Charger** is the perfect solution.
- 2 Ergonomic design is crucial for proper posture. Our adjustable **ZG1 Monitor Arm** allows you to tailor the position of your screen to your needs. It also helps you keep a clutter-free desk thanks to a concealed cable channel in the arm.
- 3 Our **Mini Port Replicator** reduces the number of cables needed to get your laptop up and running – just plug in your USB-C connector. Part of our Custom Module series, the Mini Port Replicator is compatible with our Desk2, Pix, Power Frame and Coni Duo.
- 4 Our modular **DESK 1** power strip allows you to curate the data, media and power right you need in one place. The unit can be easily clamped to the edge of a tabletop to make plugging and unplugging even easier.
- 5 **Automatic Wrap:** Neat cable management is beneficial from a security as well as design perspective because it helps prevent trip hazards.



Aircharge
Touchdown area **P. 10**



Cable snake®
Meeting room **P. 16**



CASIA 2
Kitchen /
Break-out area **P. 22**



CONI
Huddle room **P. 14**



Custom Modul
Huddle room **P. 14**



CYCLE
Agile room /
Training room **P. 12**
Lounge /
Welcome area **P. 18**



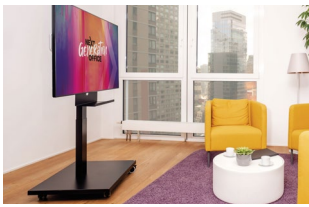
DESK 1
Home office **P. 24**



DESK 2
Desk sharing **P. 8**



ELEVATOR
Kitchen / Break-
out area **P. 22**



Independent Monitor
Agile room /
Training room **P. 12**



Independent Workplace
Agile room /
Training room **P. 12**
Silent booth **P. 20**



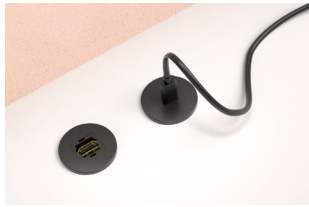
iotspot
Desk sharing **P. 8**
Meeting room **P. 16**
Silent booth **P. 20**



KAPSA
Touchdown area **P. 10**
Lounge /
Welcome area **P. 18**



LOOP IN CHARGE
Touchdown area **P. 10**



MINI PIX
Silent booth **P. 20**



Mini Port Replicator
Touchdown area **P. 10**
Home office **P. 24**



MOV:E
Huddle room **P. 14**
Lounge /
Welcome area **P. 18**



OCHNO
Huddle room **P. 14**



PIX
Lounge /
Welcome area **P. 18**



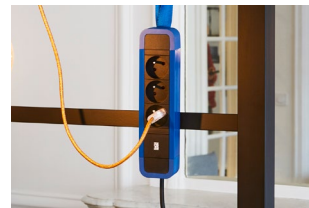
PIX HOLDER
Lounge /
Welcome area **P. 18**



POWER FRAME
Silent booth **P. 20**



**POWER FRAME
COVER**
Meeting room **P. 16**



PRIMO 2
AgilesSpaces /
Training room **P. 12**



STEP
Desk sharing **P. 8**



TOP FRAME
Meeting room **P. 16**



TWIST 1 + 2
Kitchen / Break-
out area **P. 22**



**Custom Module
USB A/C Charger**
Desk sharing **P. 8**
Kitchen / Break-
out area **P. 22**



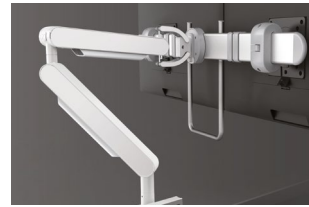
USB-C Charger 60 W
Meetings room **P. 16**



**Integrated USB
Charger**
Home office **P. 24**



ZG1 Monitor Arm
Desk sharing **P. 8**
Touchdown area **P. 10**
Home office **P. 24**



ZGX Crossbar
Desk sharing **P. 8**

