



PaperCut™

PaperCut MF

Basic Windows Protected Printing Mode
(WPP) Support

March 2025

 PaperCut™
MF | 24.1



**Securely protect, streamline,
and manage, your print
environment with PaperCut's
basic support for **Windows
Protected Print Mode (WPP)****



What is “Windows Protected Print”?

In October Microsoft launched Windows Protected Print Mode (WPP), which builds upon the Internet Printing Protocol (IPP) stack.

This is the biggest change in printing in 20 years.

Key changes to be aware of:

- ▶ No more support for manufacturer drivers
- ▶ Less access into the print stack
- ▶ Spooler components have less privileges

Why?

These changes are part of Microsoft’s broader effort to secure the printing ecosystem on Windows, following a series of vulnerabilities and attacks in recent years.

tl;dr Problem > Solution > Benefit



Enabling WPP,
permanently deletes
existing drivers and
print queues.



We detect if a
computer has WPP
mode enabled and
automatically install
Mobility Print queues
deployed via Print
Deploy, in a WPP
compatible way.



A seamless printing
experience. No
disruptions.



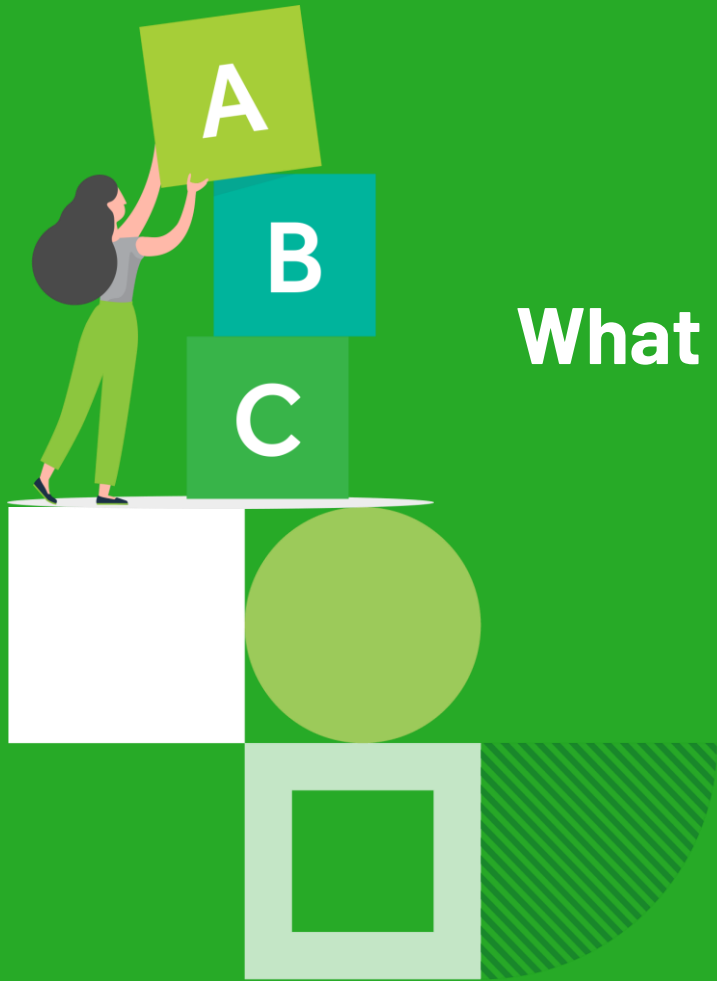
What's coming?



► **Windows Protected Print Mode Support Phase 1: Mobility and basic finishing options**

With this release we can now support early adopters of WPP, ensuring smooth transition for PaperCut Print Deploy customers with Mobility Print queues that don't have advanced printing requirements.

- Hive - basic finishing early 2025
- Hive - advanced finishing mid 2025
- MF - advanced finishing in MF 25.1



What is Basic Windows Protected Printing Support?





Basic Windows Protected Printing Support



What it is



Who cares



Why is it exciting?

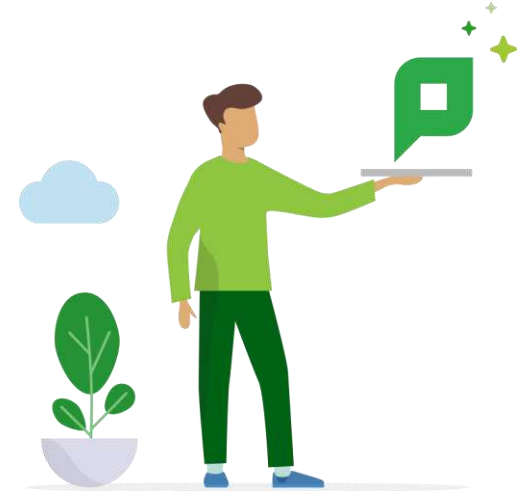


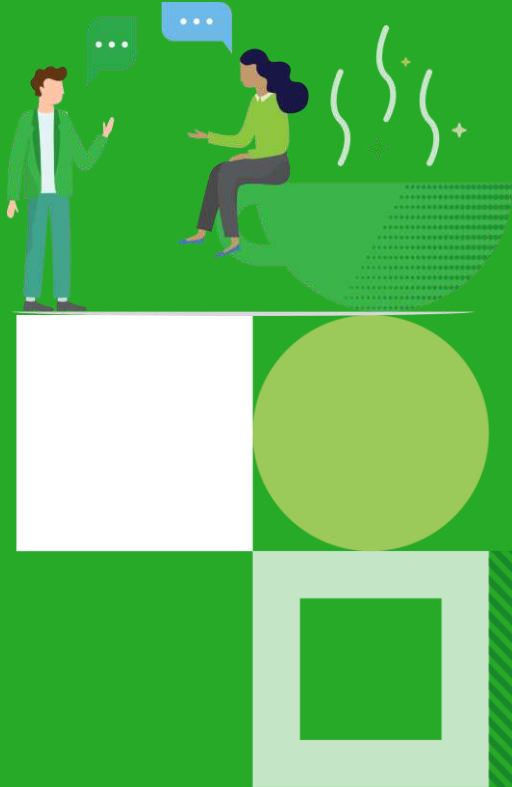
How it works

► Windows Protected Print Mode Support Phase 1: Mobility Print and basic finishing options

With this release we can now support early adopters of WPP, ensuring smooth transition for:

- PaperCut Print Deploy customers with Mobility Print queues that don't have advanced printing requirements





Who cares about Basic Windows Protected Printing Support?





Early adopters of WPP



What it is



Who cares



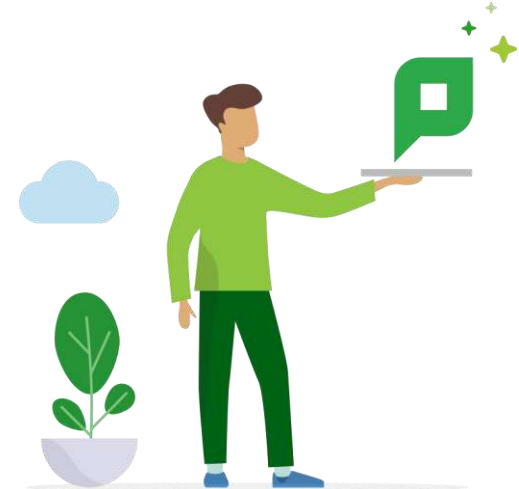
Why is it exciting?



How it works

For **IT admins with basic print finishing requirements**, looking to enhance security and simplify print management, enabling WPP may be a game changer, allowing them to benefit from:

- Improved Security: Secures sensitive data by eliminating driver vulnerabilities
- Lower Maintenance: Less need for ongoing driver updates and troubleshooting
- Compliance: Readiness for the WPP mandate, ensuring the organization is not caught off guard





PaperCut resellers



What it is



Who cares



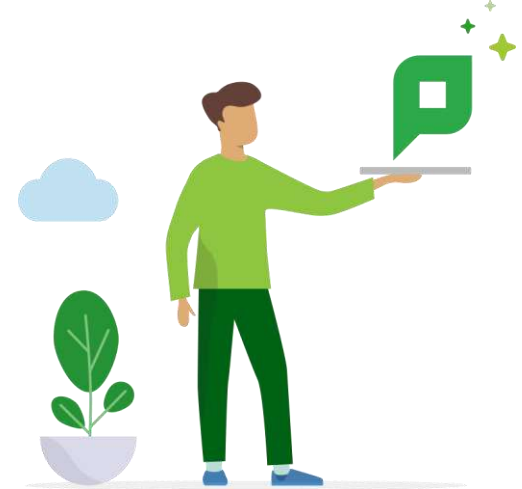
Why is it exciting?



How it works

PaperCut's Phase 1 solution provides **Resellers** a unique advantage, offering a solution to support WPP that enhances security and future-proofs their **customers'** print environments.

- Competitive Offering: Meeting industry changes head-on, **resellers** can differentiate by aligning with Microsoft's security direction.
- Reduced Support Burden: Providing **customers** with a seamless transition reduces the need for extensive support, boosting customer satisfaction.





**Why is Basic Windows Protected
Printing Support exciting?**





Phase 1: Basic Windows Protected Printing Support



What it is



Who cares

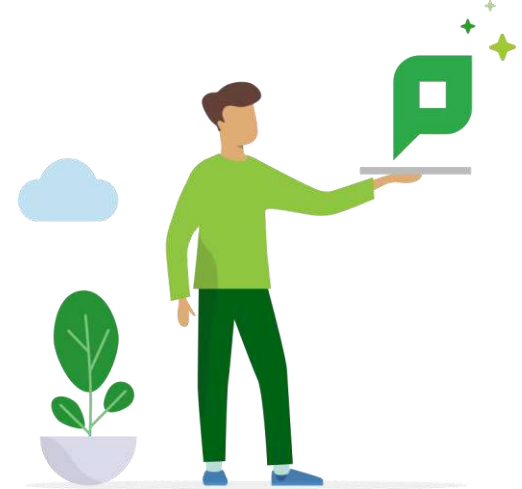


Why is it exciting?



How it works

No configuration needed. Customers with basic print finishing needs using mobility print queues with print deploy can **enable WPP and continue printing without any disruption.**





How Basic Windows Protected Printing Support works





No configuration needed!



What it is



Who cares?



Why is it exciting?



How it works

Customers already use Mobility Print queues with Print Deploy
(50% of Print Deploy orgs are)

that don't require advanced finishing needs
(like stapling, tray selection, hole punching and binding)

Can enable WPP, **without disruption to their print environment**, even for printers that are not WPP ready.

Yep, just like that 🚀

