



# PaperCut™

## PaperCut MF

New feature release:  
Scan Reporting

March 2025

 PaperCut™  
MF | 24.1



**Optimize** document  
workflows, **understand** user  
behaviour, and **enhance**  
organizational security with  
**Scan Reporting**

# tl;dr Problem > Solution > Benefit



There is often  
a lack of  
visibility into  
scanning  
activities and  
device usage



Report on  
interactive vs  
native  
scanning  
activities and  
scan action  
usage of users



Gain insight into an  
organisation's  
scanning activities  
and how devices are  
being used, enabling  
better decision  
making and cost  
control



# What's coming?

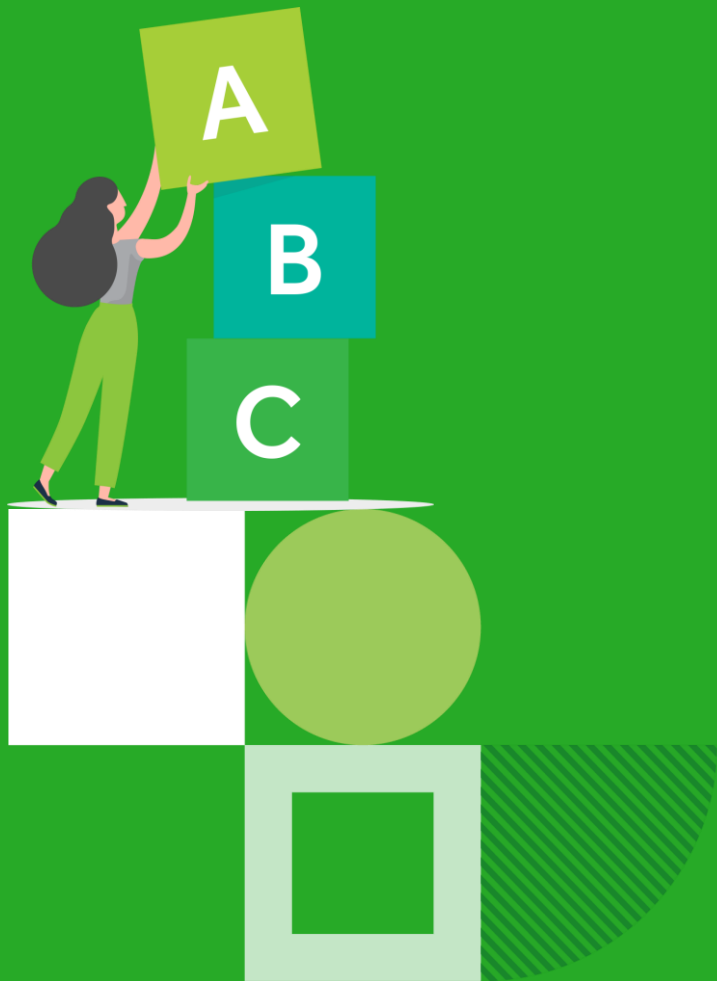


- Scan Reporting for PaperCut MF allows for the access of organisational scanning behaviour
- The presentation of any data collected through logs is imperative for it to be interpreted, actioned, and shared
- Scan Reporting gives a compelling view into an organization's current state of scanning, and indicates where an organization may want to take a deeper dive into the data



# What does this mean?

- Admins can now access built-in reports on user scanning behavior and activity:
  - Integrated Scanning v Native Scanning breakdowns
  - Scanning destination breakdowns at an organizational level
  - Scanning destination breakdowns at a user level
- These reports improve scan tracking capabilities, cost control visibility, and provide better insights into device usage
- Scan Reporting helps customers optimize their document workflows and enhances security by tracking where documents are being sent, and ensuring sensitive information is handled appropriately



# What Scan Reporting is





# Scan Reporting



What it is



Who cares

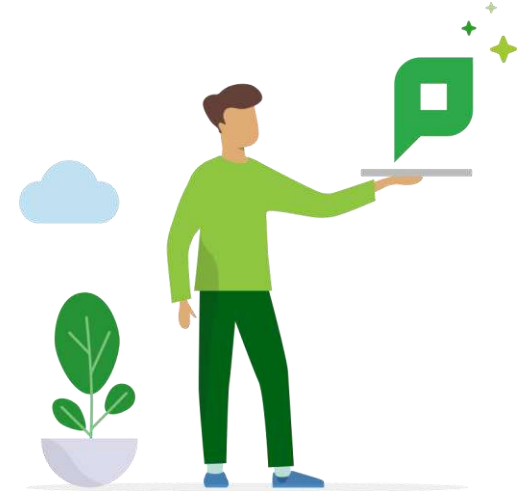


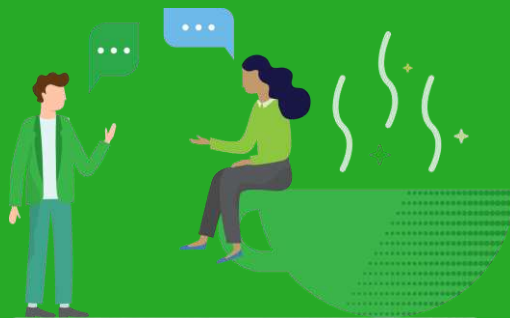
Why is it exciting?



How it works

- Scan Reporting enhances the reporting functionality of PaperCut MF by introducing new reports that break down user's scanning behavior
- Administrators can now access deeper insights into how scanning is used across their organization through built-in reports
- Scan Reports will help customers optimize their document workflows and enhance security





# Who cares about Scan Reporting?





# Scan Reporting



What it is



Who cares

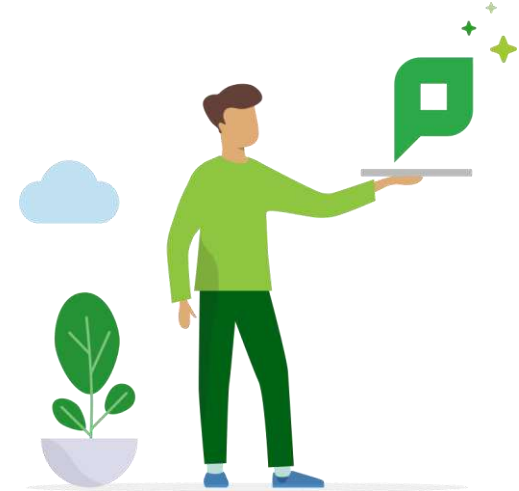


Why is it exciting?



How it works

- Customers can understand the breakdown of usage between native scanning and Integrated Scanning, who is scanning the most, and what scan actions are being used the most
- If the system admin also has scan archiving enabled, they can see the contents of the scan job
- Our partners often have customers ask about reporting on what scan actions their users use most or exactly where the scanned documents are going. They can now answer those questions by recommending that their customer update to PaperCut MF 24.1 (when launched) to access these new reporting insights into their users' scanning behavior





# Why is Scan Reporting exciting?





# Scan Reporting



What it is



Who cares

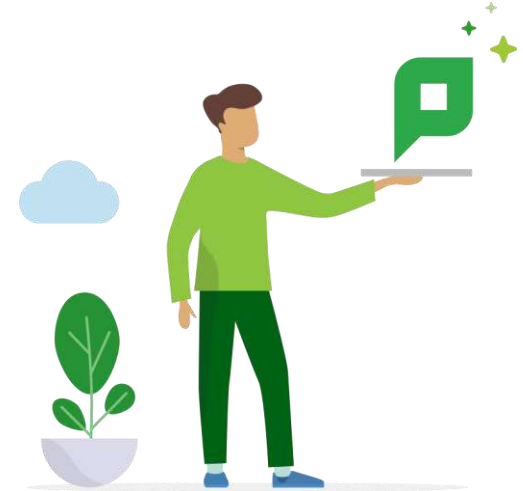


Why is it exciting?



How it works

- Understand User Behavior: Help customers identify their largest scanners, discover which devices are most frequently used, and gain a clearer picture of overall scanning trends
- Enhance Security: Assist customers in tracking where documents are being sent, including to destinations like email, folders, cloud storage, and fax, to ensure sensitive information is handled appropriately
- Advanced Document Processing: Leverage integrations with external tools for added capabilities such as keyword alerts, AI-based categorization, and monitoring of sensitive content, helping organizations protect their data and mitigate risks.





# How Scan Reporting works





# Scan Reporting



What it is



Who cares?



Why is it exciting?



How it works

Reports > Scanning Reports

admin

## Scanning Reports

User Printer Group Account Environment **Scanning** Transaction Custom Schedule / Email Reports Data Integrations

### Scanning Reports

Reports focusing on scanning, providing information about how users use the MFD for scanning, how much defined scan actions are utilised by users, etc.

Most reports are available in PDF, HTML and Excel/CSV formats.

#### Integrated Scanning v Native Scanning Breakdown - summary

[Show sample](#)

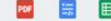
Last 30 days



#### Scanning Destination Breakdown - Organizational Summary

[Show sample](#)

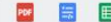
Last 30 days



#### Scanning Destination Breakdown - Users

[Show sample](#)

Last 30 days



Actions (1)

[Schedule a report](#)

