



## Bizvision Fleet Management

To ensure a seamless fulfilment of consumables for your printing devices, we can install and utilize our remote management tool - BizVision Network Fleet management Software.

### What Are The Benefits To Your Business ?

This management tool will give real-time access to the status of toner/supplies for each contracted device and is designed to gather information to manage, monitor and maintain your networked printers and copiers allowing our Technical Support division to automatically monitor errors, toners & consumables, meter readings and the requirement for software updates, to proactively respond to the raised event.



#### **Toner Levels and Consumables Monitored Automatically**

This management tool will give real-time access to the status of toner/supplies ensuring that toners and other consumables are delivered in advance of you running out.



#### **Preventative Maintenance Via Status Information**

System generated notifications of device errors and low consumables sent to an email destination of your choice ensuring optimal uptime.



#### **Accurate, Transparent Meter Readings**

Automatically logged meter readings from each device for error free billings



#### **Detailed Reporting**

Comprehensive usage reports for each of your devices including error reports, ensuring full analysis of the performance of your fleet, ensuring optimal levels of service



## Reduce Print Related Call Outs For Your IT Department

Up to 40% of all IT calls are print related. Remote notification enables us to diagnose and resolve remotely where possible or dispatch our technical team as a matter of priority when necessary

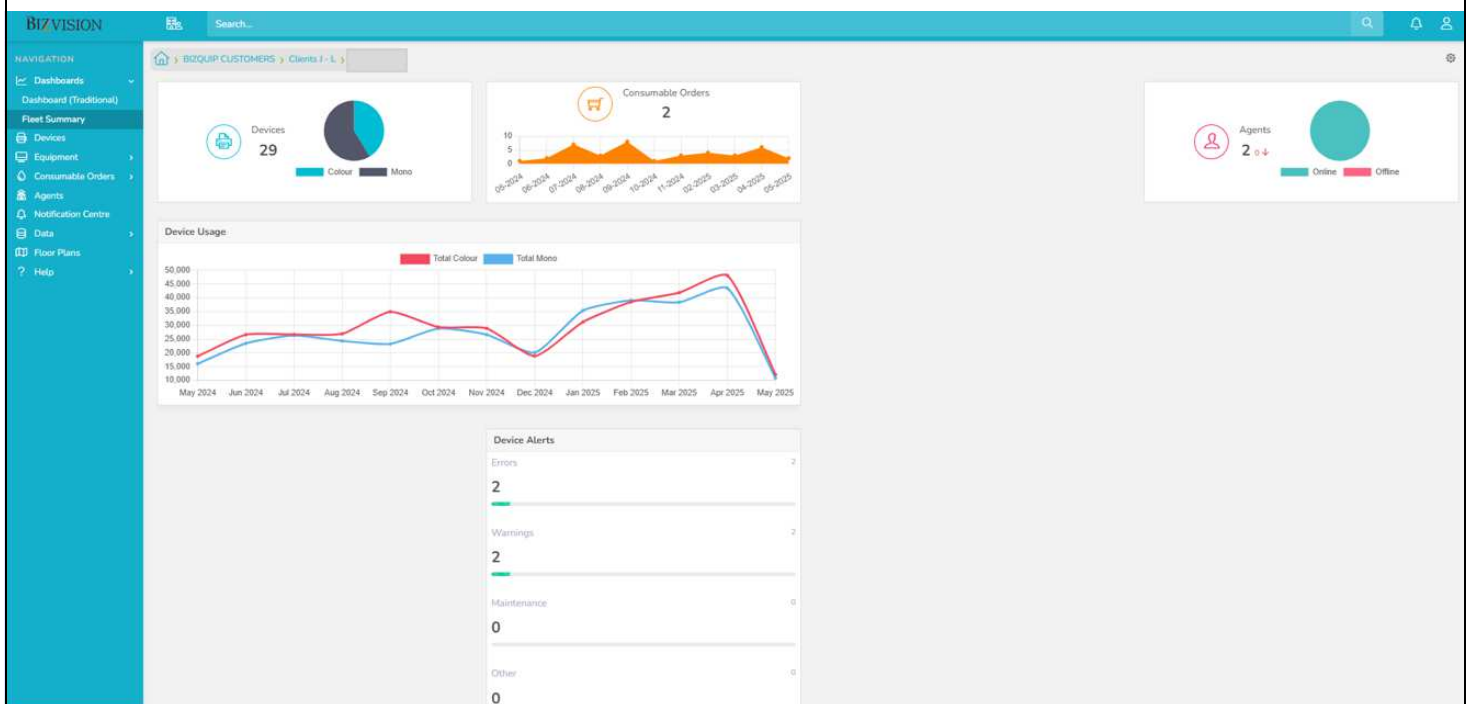


## Minimise Downtime, Stocktaking, and Print Waste

We will work with you to optimise your printer fleet, reduce your print related costs, and increase profitability.

## Real time activity dashboard:

(Please note customer info removed)



## Full visibility of toner levels for each device

Devices										
<div>0 Devices Selected</div> <div>Clear All Selected</div> <div>Device Filter</div> <div>License Filter</div>										
Manufacturer	Model	Black Toner	Cyan Toner	Magenta Toner	Yellow Toner	Last Communication	Black Drum	Cyan Drum	Magenta Drum	Yellow Drum
HP	Color LaserJet Managed MFP E78625dn	100%	100%	100%	100%	5/12/2025	100%	100%	100%	100%
HP	Color LaserJet Managed MFP E78625dn	100%	100%	100%	100%	5/12/2025	100%	100%	100%	100%
HP	Color LaserJet Managed MFP E78625dn	100%	100%	100%	100%	5/12/2025	100%	100%	100%	100%
HP	Color LaserJet Managed MFP E78625dn	100%	100%	100%	100%	5/12/2025	100%	100%	100%	100%
HP	Color LaserJet Managed MFP E78625dn	100%	100%	100%	100%	5/12/2025	100%	100%	100%	100%
HP	Color LaserJet Managed MFP E78625dn	100%	100%	100%	100%	5/12/2025	100%	100%	100%	100%
HP	Color LaserJet Managed MFP E78625dn	100%	100%	100%	100%	5/12/2025	100%	100%	100%	100%
HP	Color LaserJet Managed MFP E78625dn	100%	100%	100%	100%	5/12/2025	100%	100%	100%	100%
HP	Color LaserJet Managed MFP E78625dn	100%	100%	100%	100%	5/12/2025	100%	100%	100%	100%
HP	Color LaserJet Managed MFP E78625dn	100%	100%	100%	100%	5/12/2025	100%	100%	100%	100%
HP	Color LaserJet Enterprise MFP X58045dn	100%	100%	100%	100%	5/12/2025	100%	100%	100%	100%

## Map / floor plan view

(Site map blurred for confidentiality)

Monitor all devices across site(s) with real time monitoring as to status of devices: Traffic light solution – **Green** / **Amber** / **Red**



## Real time device alerts & warnings

Devices										
2 Devices Selected		Clear All Selected								
		Manufacturer	Model	Black Toner	Cyan Toner	Magenta Toner	Yellow Toner	Black Drum	Cyan Drum	Contract Number
<input type="checkbox"/>		Ricoh	Pro C5310s	<div><div></div></div>	<div><div></div></div>	<div><div></div></div>	<div><div></div></div>			
<input type="checkbox"/>		Ricoh	MP 7503SP	<div><div></div></div>	<div><div></div></div>	<div><div></div></div>	<div><div></div></div>			
<input type="checkbox"/>		HP	HP Color LaserJet MF	<div><div></div></div>	<div><div></div></div>	<div><div></div></div>	<div><div></div></div>			
<input checked="" type="checkbox"/>		Ricoh	Pro 8220	<div><div></div></div>	<div><div></div></div>	<div><div></div></div>	<div><div></div></div>			Pro 8220S
<input type="checkbox"/>		Ricoh	MP 7503SP	<div><div></div></div>	<div><div></div></div>	<div><div></div></div>	<div><div></div></div>			
<input type="checkbox"/>		Ricoh	MP 7503SP	<div><div></div></div>	<div><div></div></div>	<div><div></div></div>	<div><div></div></div>			
<input type="checkbox"/>		Ricoh	MP C6503SP	<div><div></div></div>	<div><div></div></div>	<div><div></div></div>	<div><div></div></div>			
<input type="checkbox"/>		Ricoh	MP 7503SP	<div><div></div></div>	<div><div></div></div>	<div><div></div></div>	<div><div></div></div>			
<input type="checkbox"/>		Ricoh	IM C8000	<div><div></div></div>	<div><div></div></div>	<div><div></div></div>	<div><div></div></div>			
<input type="checkbox"/>		Ricoh	IM 7000	<div><div></div></div>	<div><div></div></div>	<div><div></div></div>	<div><div></div></div>			
<input type="checkbox"/>		Ricoh	MP C6503SP	<div><div></div></div>	<div><div></div></div>	<div><div></div></div>	<div><div></div></div>			
<input type="checkbox"/>		Ricoh	IM C8000	<div><div></div></div>	<div><div></div></div>	<div><div></div></div>	<div><div></div></div>			

Page: 1 of 9 Go Page size: 100 Change Item 1 to 100 of 832

General Information	Device Errors	Device Warnings	Maintenance Messages	Other Messages	Device Readings	Device Consumables
Report Time	Clear Time	Code	Message	Device Total Count		
6/18/2024 11:04:14 AM	6/18/2024 11:25:28 AM	1104	Empty: one of two bottles (30020)	963782		
6/18/2024 11:04:14 AM	6/18/2024 11:04:45 AM	1	Replace Cleaning Web (30402)	963782		
4/8/2024 2:33:59 PM	6/18/2024 11:04:45 AM	1	Replace Cleaning Web (30402)	963782		
4/8/2024 2:33:59 PM	6/18/2024 11:04:45 AM	1104	Empty: one of two bottles (30020)	963782		
3/21/2024 12:40:12 PM	4/8/2024 2:35:14 PM	1104	Empty: one of two bottles (30020)	963752		
3/21/2024 12:40:12 PM	4/8/2024 2:35:14 PM	1	Replace Cleaning Web (30402)	963752		
2/26/2024 11:23:12 AM	3/21/2024 12:40:46 PM	1	Replace Cleaning Web (30402)	963706		
2/9/2024 10:26:50 AM	3/21/2024 12:40:46 PM	1104	Empty: one of two bottles (30020)	963629		

Page: 1 of 17 Go Page size: 8 Change Item 1 to 8 of 129

# BIZVISION

Bizquip's MPS (Managed Print Service) portal to manage, monitor & maintain your printer fleet.

Key Benefits Include	Time /Cost Savings	Productivity Gain
<b>Real time device status information</b>	✓	✓
<b>Asset protection via preventative maintenance</b>	✓	✓
<b>Toner levels</b>	✓	✓
<b>Monitored and dispatched automatically</b>	✓	✓
<b>Meter readings logged automatically</b>	✓	✓
<b>Increased device uptime</b>	✓	✓