

Humanscale

**Trea Lite Task**

Designed by Todd Bracher.



## Trea Lite Task


From office to living room to everywhere in between, multipurpose chairs are the new standard for work. However, with flexible aesthetics prioritized, ergonomic comfort – along with health – has been lost. Trea Lite Task is a simple yet striking modern task chair designed to bridge this gap and restore wellness, wherever work happens. It balances clean, versatile style with advanced ergonomics and functionality, protecting its user throughout any posture. With no dials or knobs, comfort comes instantly, while correctable height, 360° swivel, and self-adjusting recline offer freedom of movement that's always supported.






### **Solid State Mechanism**

Trea Lite Task leads with function and versatility without sacrificing advanced ergonomic comfort. Its 12° supported recline feels as effortless as it is generous, powered by a Solid State mechanism. No dials or knobs are required for instantly tailored support, which moves synchronously with its user and allows for full freedom of movement.

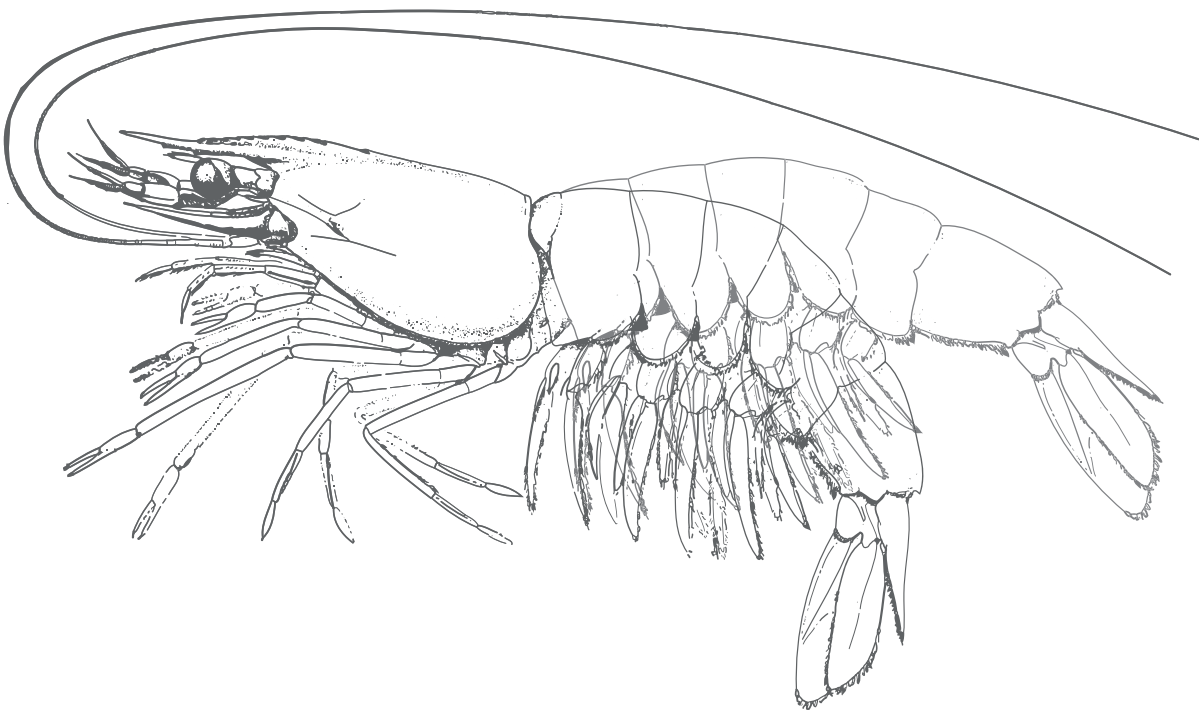


Made to fit **95%**  
all body types

**360° swivel** 

Greaseless, swivel and height-adjustable pneumatic cylinder accommodates various seat/surface heights.

Minimalist design lends true versatility without sacrificing comfort, style, or first-class functionality.



### **Inspired by Nature**

Designed by Todd Bracher, Trea Lite Task is a simple yet highly flexible light task chair inspired by nature. Invoking the award-winning Trea's silhouette, its minimalist surfacing behaves like a living shell, gently articulating against the body's pivot points while moving in harmony with its user.



### **Customization**

Our textiles are carefully selected to enhance the ergonomic function and Planet Positive sustainability of our designs. Featuring a broad spectrum of colors, patterns, and textures, all are rigorously tested to ensure they perform as well after ten years as they do on day one.



#### **Casters**

- Hard
- Soft
- Hard Braking
- Soft Braking

#### **Base**

- White
- Polished  
Aluminum

#### **Seat Pad**

- Upholstered
- Plastic

“The Trea chair can be outfitted with an optional seat pad, adding a touch of color and customization to any space.”

— Todd Bracher

## Design by Todd Bracher

Todd Bracher is an industrial designer and design strategist, working at the intersection of design, science, and business with a commitment to solutions for matters of global concern. Todd has been honored as a Top 100 Global Design Influencer by Wallpaper\* Magazine, two-time International Designer of the Year, and with numerous RedDot's Best of the Best and NeoCon Gold Awards for product design.

His work speaks a clear, unambiguous language that is guided first and foremost by function. This leads him to unexpectedly elegant solutions to contemporary problems and addresses the volatile proximity of life and work in new and pleasing forms.

As with all Bracher designs, Trea Lite Task is function-first, and carries a clean, timeless aesthetic. The chair offers intuitive comfort by mimicking the human body's instinctive recline and embracing the sitter in a supportive shell.







## Applications

Ideally suited to a wide range of work environments, Trea Lite Task brings new lightweight language to high-function design. Its clean, minimalist aesthetic elevates any setting without pulling focus, while the powerful, ergonomic mechanics at its core are instantly felt but never seen.







# Trea

Statement of Line



**Lite Task**  
T400



**Lite Task Stool**  
T500



**4-Leg**  
T100



**4-Star**  
T300



**Cantilever**  
T200

## Specifications

	in	mm
<b>Seat Depth</b> <i>(from lumbar to front of seat)</i>	18.50"	470mm
<b>Seat Height</b>	17.32" - 22.24"	440mm- 565mm
<b>Seat Width</b>	20.27"	515mm
<b>Backrest Height</b> <i>(from top of compressed seat cushion to top of backrest)</i>	15.75"	400mm
<b>Backrest Width</b>	22"	560mm
<b>Height</b>	31.7" - 36.61"	805mm- 930mm
<b>Base Diameter</b>	27.55"	700mm
	lbs	kg
<b>Chair Weight</b>	20.5lbs	9.3kg

## Sustainability

At Humanscale, our approach to product development and manufacturing embodies our mission to minimize our impacts. We believe that the best designs in the world achieve more with less, so we act accordingly. Trea Lite Task is no different, made with far fewer parts than the standard task chair, and thus reducing its climate footprint.

Like all Humanscale products, Trea Lite Task is free of Red-List chemicals, which is not only better for the planet, but for the user as well, making it safe to use in any environment. It is also LPC certified, as well as certified Indoor Advantage and BIFMA LEVEL 3.

## Warranty

Trea Lite Task comes with an industry-leading 15\* warranty. Made from highly durable materials, Trea Lite Task is a task chair designed to last, staying in use and out of landfills. A non-erodible metal spring powers its recline and works as well after a decade as it does on day one.





For more information, please visit [Humanscale.com](https://www.humanscale.com).

© 2024 Humanscale. All Rights Reserved.

Humanscale